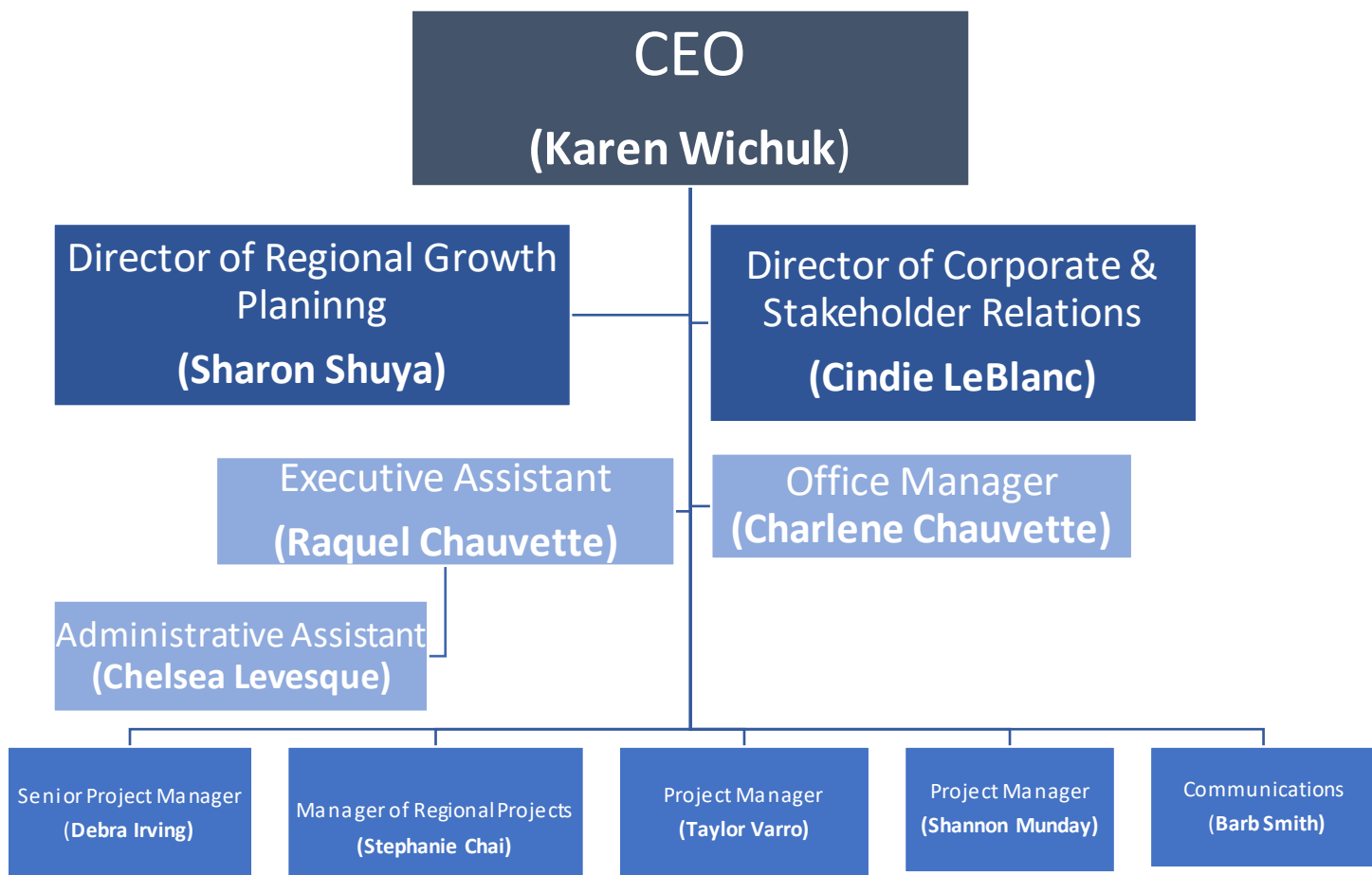


EMRB Administration

EMRB Administration: Organizational Structure



EMRB Board Members: 2021-2025

Rural Members

Vice Chair: Mayor Alanna Hnatiw (Sturgeon County)

Mayor Rod Frank (Strathcona County)

Mayor Tanni Doblanko (Leduc County)

Mayor Allan Gamble (Parkland County)

Urban Members

Chair: Mayor William Choy (Town of Stony Plain)

Mayor Bill Daneluik (City of Beaumont)

Mayor Jeff Craddock (Town of Devon)

Mayor Amarjeet Sohi (City of Edmonton)

Mayor Gale Katchur (City of Fort Saskatchewan)

Mayor Bob Young (City of Leduc)

Mayor Simon Boersma (Town of Morinville)

Mayor Cathy Heron (City of St. Albert)

Mayor Jeff Acker (City of Spruce Grove)

Additional Members

Shawn Ewasiuk (A/Assistant Deputy Minister, Ministry of Municipal Affairs, *Ex Officio (non-voting)*)

Karen Wichuk (CEO, EMRB, *Ex Officio (non-voting)*)



EMRB Initiatives Overview:

RAMP

Overview

The **Regional Agriculture Master Plan (RAMP)** was approved by the Edmonton Metropolitan Region Board (EMRB) in August 2021. RAMP is a regional plan to manage land use for the future of agriculture and the agricultural sector. RAMP is comprised of four (4) policy areas. The Policy Areas are established through a series of maps, and are used to establish unique agricultural areas that allow for tailored land-use policies to support growth and continuation of all forms of agriculture:

1. **Policy Area 1 – Rural Agriculture** - represents the largest policy area and is closely aligned to the Rural Policy Area Tier in the Growth Plan. This land area is the priority focus areas for RAMP based on **existing land uses primarily for agriculture**.
2. **Policy Area 2 – Agriculture Coexisting with other Land Uses** - the second largest policy area and includes lands which have specific land use designations and operate under **existing planning approvals**. This policy area includes a range of land uses and resource-based extraction areas for coal, sand, and gravel.
3. **Policy Area 3 – Agriculture in Future Transition Lands** - includes agricultural lands generally within the Metropolitan Area Policy Area of the Growth Plan and includes *agricultural lands identified for future growth (planned or unplanned)*.
4. **Policy Area 4 – Urban Agriculture** - supports the emerging urban agriculture sector and its potential for growth in the built-up urban areas within urban centres in the EMR.

One of the key pieces of RAMP is the development of a **Land Evaluation and Site Assessment (LESA)** tool. The LESA tool is intended to be an unbiased, scientific tool that applies a set of land evaluation and site assessment criteria across the whole region to determine which land is considered 'prime agricultural land' for the purpose of RAMP Policy application. The LESA tool applied a threshold of 58%.

RAMP and Sturgeon County

RAMP is largely a **rural land use plan**. Almost all the prime agricultural lands identified by the LESA tool are in rural municipalities, primarily in Leduc County and Sturgeon County. As Sturgeon County is home to the second largest quantity of prime agricultural land, the County is going to be subject to all the policies outlined in *Policy Area 1* of RAMP. *Policy Area 1* has a total of **22 policies that will be applicable to Sturgeon County**.

Next Steps

Immediate next steps on RAMP include forming a working group of administrative staff from across the member municipalities to begin work on the RAMP Monitoring and Reporting Framework. In addition, to begin to implement RAMP more fully, Sturgeon County will need to amend land-use bylaws, amend the Municipal Development Plan (MDP), and will need to submit a "*RAMP Regional Context Statement*". The RAMP Regional Context statement must identify how the objectives and policies of RAMP will

impact the County's MDP and how the existing MDP conforms with, or diverges from, the new policies in RAMP. There are various timelines associated with completing these tasks, however, these timelines do not come into effect until RAMP is approved by the Government of Alberta. The timeline for the province's approval is still unknown.

EMRB Initiatives

Overview: IRTMP

IRTMP MEETING BRIEF



Overview – Integrated Regional Transportation Master Plan

The Integrated Regional Transportation Master Plan (IRTMP) was approved by the EMRB in June 2021. The IRTMP is an integrated, forward-looking plan for efficient movement of goods and regional mobility to connect the EMR communities and economy to the world. The policy framework is comprised of four distinct “desired outcomes” and four key strategies (each with corresponding policies) to achieve the desired outcomes. These core elements make up the IRTMP Plan and policy structure.

The **desired outcomes** of IRTMP are as follows:

1. Sustainable and Resilient Communities
2. Healthy Human and Natural System
3. Economic Competitiveness and Prosperity
4. Inclusive of the Region’s Diverse Needs

In order to deliver the IRTMP outcomes, four strategies were developed; each with a set of policies that can be implemented throughout the region.

The **key strategies** are as follows:

1. Connecting Goods to Market
2. Getting People to Jobs and Services
3. Optimizing the use of Existing Corridors and Infrastructure
4. Connecting Modes and Supporting Modal Shift

Overview – Project Prioritization Process & 2021 Regional Priorities Report

The second piece of the IRTMP initiative is the renewed project prioritization process and corresponding *2021 Regional Transportation Priorities Report*. The EMRB Regional Transportation Prioritization Process groups regionally significant transportation projects based on their alignment with the IRTMP goals and policies. A prioritization process is an important tool to use to inform decisions. The renewed process groups projects first by their phase (advance to planning, ready for design, or ready for construction), evaluates each project against criteria that is grouped across five project outcomes, and then ranks each project into top, medium, or low priority groups for each phase. These rankings ultimately became the *2021 Regional Transportation Priorities Report* that was provided to Alberta Transportation for consideration during their capital planning process.

IRTMP and Sturgeon County

Successful implementation of the IRTMP needs to happen at the *local level* with each municipality, through local transportation master plans, and consideration of the IRTMP in the development of the next Growth Plan.

Regarding the *2021 Regional Transportation Priorities Report*, 16 projects ranked in the report are in Sturgeon County.

Next Steps

There are no immediate next steps required of Sturgeon County. The most important action moving forward will be a unified advocacy effort by all EMRB member municipalities of the “top priority” projects listed in the *2021 Regional Transportation Priorities Report*.



EMRB Initiatives

Overview: SISB

Overview

The Shared Investment for Shared Benefit (SISB) Framework and Model were approved by the EMRB in June 2021. The SISB Framework and Model are intended to invest in and leverage the collective strengths, capacity, and resources of the Region's municipalities to efficiently deliver infrastructure, programs and services that would otherwise be beyond each municipality's ability to pay for and accomplish individually. The ultimate objective of the SISB initiative is to create long-term shared benefits that will enhance the Region's overall quality of life and increase global competitiveness.

The process starts with EMRB municipalities investing collectively in an agreed-upon initiative, with contributions based on population, assessed value and/or expected usage and potentially taking the form of non-financial resources, and additional contributions from external partners if applicable. When financial benefits (direct revenues) begin to flow from an investment, a portion of these benefits are allocated to a revenue pool to fund future investments. If applicable, a subsequent portion of the total benefits are then allocated to the investment's host jurisdiction as compensation for providing any required services and infrastructure to the investment. Finally, the remaining revenues are allocated to EMRB municipalities in proportion to their relative contributions to the investment.

To identify a project for the SISB model, a six-step Initiative Assessment Process (IAP) has been developed. The IAP includes various steps such as assessments of a prospective project's regional significance by a Working Committee, detailed feasibility studies and business cases, economic impact evaluations, member votes of support for a project, and multiple check-ins with municipal councils. A project must make it through the full IAP in order to be executed.

SISB and Sturgeon County

Throughout the development of the SISB Framework and Model, Sturgeon County raised concerns about *Step 4 Member Vote of Support* of the IAP due to the requirement for mandatory participation on a SISB project that passes the vote and will be governed by the EMRB; participation is not mandatory for projects that will be governed by a third-party. The rationale behind the County's lack of support for mandatory participation in the SISB model was due to the weak EMRB dispute resolution mechanism and the absence of other options for recourse, should a municipality not want to participate on a project approved for SISB.

Next Steps

None identified at this time. The Working Committee for the IAP has not been formed, and no projects have been identified (to date) for the SISB model.



EMRB Initiatives

Overview: MRSP

Overview

The purpose of the Metropolitan Region Servicing Plan (MRSP) was to identify the services needed to support the implementation of the *Growth Plan*, support the optimization of shared services, and to facilitate orderly, environmentally responsible, and economic growth in the EMR. Similar to the other core EMRB initiatives, the MRSP stood up a task force to achieve its objectives, but it was determined that the work could have the most impact if it was broken down in priority service areas: **solid waste, stormwater, fire/emergency medical services, and emergency management.**

In early 2020, it was decided that there would be a MRSP Standing Committee to oversee the work of four separate “Collaboratives” for each of the priority service areas noted. The Standing Committee is made up of elected officials from member municipalities, while the Collaboratives are comprised of non-elected subject matter experts from the member municipalities.

MRSP and Sturgeon County

To date, only the Solid Waste Collaborative and the Stormwater Collaborative have formed and begun their work; Sturgeon County has representatives on both Collaboratives. The Fire/Emergency Medical Services Collaborative and the Emergency Management Collaborative have yet to begin, primarily due to the Pandemic and the nature of the two outstanding Collaboratives; prospective subject matter experts for these two Collaboratives are still very much involved in leading the Pandemic response in their municipalities.

Next Steps

Regarding the outstanding Fire/Emergency Medical Services Collaborative, the CAO Standing Committee decided that as a first step, there should be a meeting between all 13 CAOs and the respective Fire Chiefs in the region to review all the existing agreements and identify any gaps in service coverage.

Regarding the outstanding Emergency Management Collaborative, CAOs have been adamant that they do not want to miss the opportunity to do a post-mortem on member responses to the Pandemic. CAOs proposed doing the post-mortem in the form of a symposium, however there has been timeline discussed as to when this may occur.



EMRB Initiatives

Overview: Regional Broadband

Overview

The EMRB's Regional Broadband initiative is based on the premise that retaining and attracting citizens and business is dependent on reliable high-speed connectivity, and municipalities must work collaboratively on a shared advocacy effort to achieve their goal. Widespread access to reliable broadband is an ongoing challenge in the region, primarily for residents in rural municipalities and therefore has been identified as a priority in the EMRB's Strategic Plan.

Regional Broadband and Sturgeon County

Sturgeon County has long voiced its concern about lack of access to reliable broadband for rural residents. The County also supported the EMRB's 2020 *Broadband Situational Analysis Report* that was commissioned to fully understand the impact (or lack thereof) of reliable broadband in the region.

Next Steps

As the ongoing Pandemic further highlighted the need for access to reliable broadband for all residents, it was determined that the broadband initiative would become a standing item for the MRSP Standing Committee to accelerate work on the initiative.

EMRB Initiatives

Overview: REF Framework

Overview

The EMRBs Regional Evaluation Framework (REF) framework is a legislated process whereby municipalities must bring forward proposals to the EMRB so the Board can evaluate how local statutory plans and statutory plan amendments reflect the directions, policies, and collective outcomes of the Growth Plan.

The REF process requires that municipalities submit their applications after receiving first reading but before receiving third reading of the bylaw(s). The decision to submit the application before or after holding a public hearing on the bylaw(s) is solely at the discretion of the municipality. After the REF application is deemed complete, the application undergoes an evaluation by a third-party and then a recommendation for approval or rejection is made by the EMRB administration. In the event the EMRB approves a recommendation, there is a mandatory 28-day appeal period to follow; if no appeal is made, the REF application is deemed approved.

REF and Sturgeon County

Sturgeon County made one REF application in 2021 for the New Sturgeon Valley ASP, MDP Amendment and New Sturgeon Valley Core ASP. The application was officially approved on September 7th, 2021 after the appeal period had expired.

Next Steps

None identified.

Additional EMRB Committees

Audit and Finance Committee

Purpose: The Audit and Finance Committee (AFC) provides strategic leadership and advice to the Board regarding its financial oversight, compliance, financial risk management, external reporting, and internal control policies and practices.

Membership: 5-7 appointed members of the Board, consisting of:

- the Committee Chair,
- the City of Edmonton,
- 4-6 additional Board Members (to include **at** least 1 County, 1 Town and 1 City),
- the Board Chair (ex-officio, non-voting), and
- the CEO (ex-officio, non-voting).

Sturgeon County does not currently sit on the AFC

Governance and Human Resource Committee

Purpose: The Governance and Human Resources Committee (GHRC) has been established to oversee the effectiveness of the governing system including the Board's role in managing its sole employee, the CEO. Further, the Committee has been established to advise Management and the Board regarding all matters related to the governance of the organization and ensure governance practices and processes add value to the EMRB.

Membership: 5-7 appointed members of the Board consisting of:

- the Committee Chair,
- the Board Chair (voting),
- the City of Edmonton,
- 3-5 additional Board Members (to include at least 1 County, 1 Town and 1 City),
- the CEO (ex-officio, non-voting).

Sturgeon County does not currently sit on the GHRC

Additional EMRB Committees Cont'd

Committee of the Whole

Purpose: The Committee of the Whole (COW) provides an informal, inclusive, and open strategic discussion forum to raise, address, and formulate potential resolutions to ongoing, new, urgent, or emergent topical issues, challenges, or opportunities and to explore and formulate suitable response strategies, ideas, activities, or actions

Membership: The COW is comprised of the full Board Membership (13) and the EMRB CEO.