

# Location Map

Attachment 1

Bridge File 2212 (Cunningham Bridge) Rehabilitation

4-Jul-2022



Prepared For:

Prepared By:

Signed:

Transportation & Engineering Services

NAD\_1983\_10TM\_AEP\_Resource  
© Sturgeon County



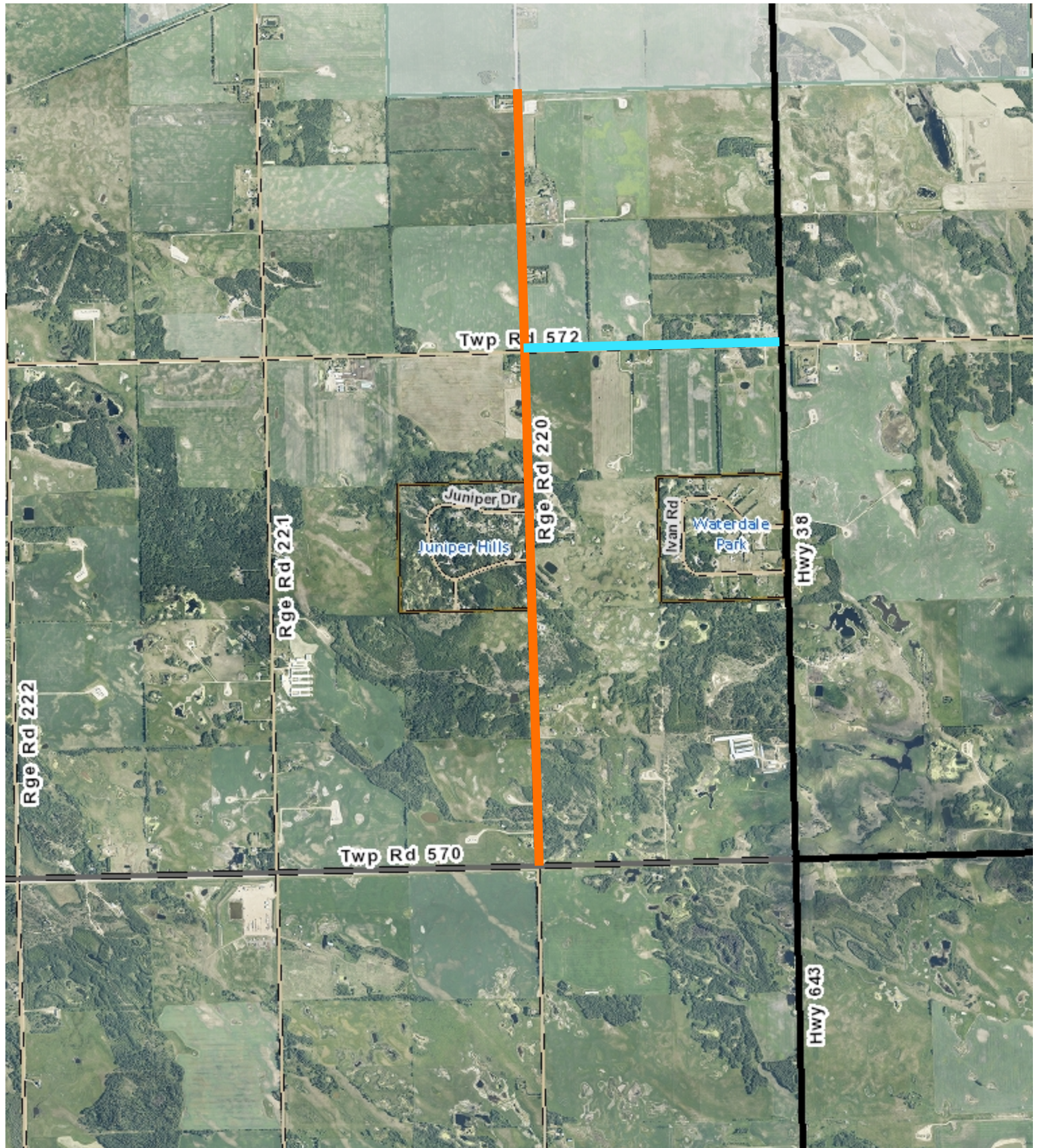
Information on this map is provided solely for the user's information and, while thought to be accurate, is provided strictly "as is" and without warranty of any kind.



# Location Map

Range Road 220 Collector Reconstruction

4-Jul-2022



Prepared For:

Prepared By:

Signed:

Transportation & Engineering Services

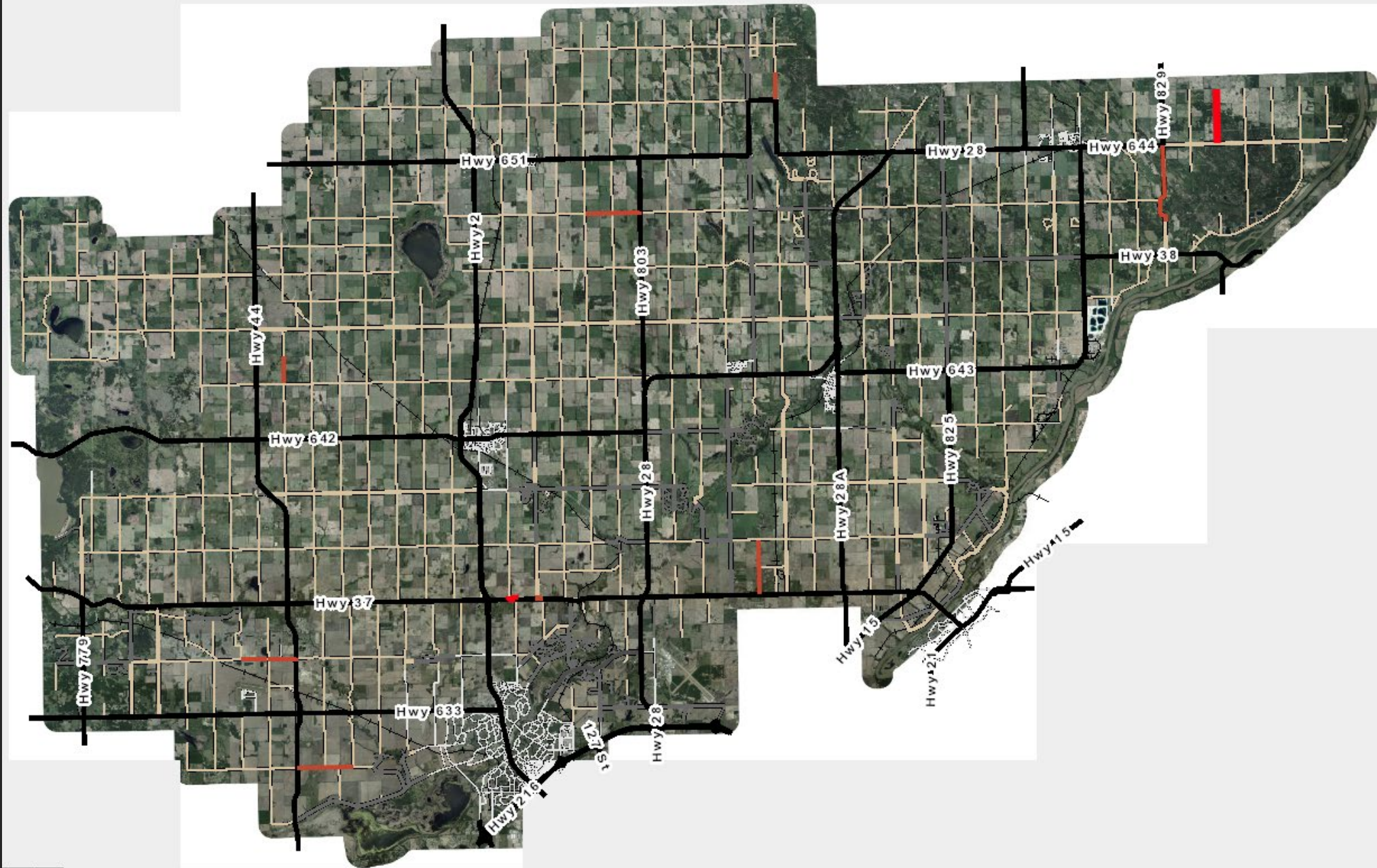
NAD\_1983\_10TM\_AEP\_Resource  
© Sturgeon County



Information on this map is provided solely for the user's information and, while thought to be accurate, is provided strictly "as is" and without warranty of any kind.



# Local Roads Stabilization Projects







## *MEADOWVIEW DRIVE RECONSTRUCTION*

MEADOWVIEW DRIVE WEST FROM HIGHWAY 44 TO RANGE ROAD 263A

MEADOWVIEW DRIVE EAST FROM STURGEON RIVER BRIDGE TO ST. ALBERT CITY BOUNDARY

### LOCATION PLAN



Drawn: D.D.

Date: March 20, 2022

Dwg. No.: STUR\_101\_Location

Checked: K.S./J.A.

Scale: N.T.S.

File No.: STUR\_101