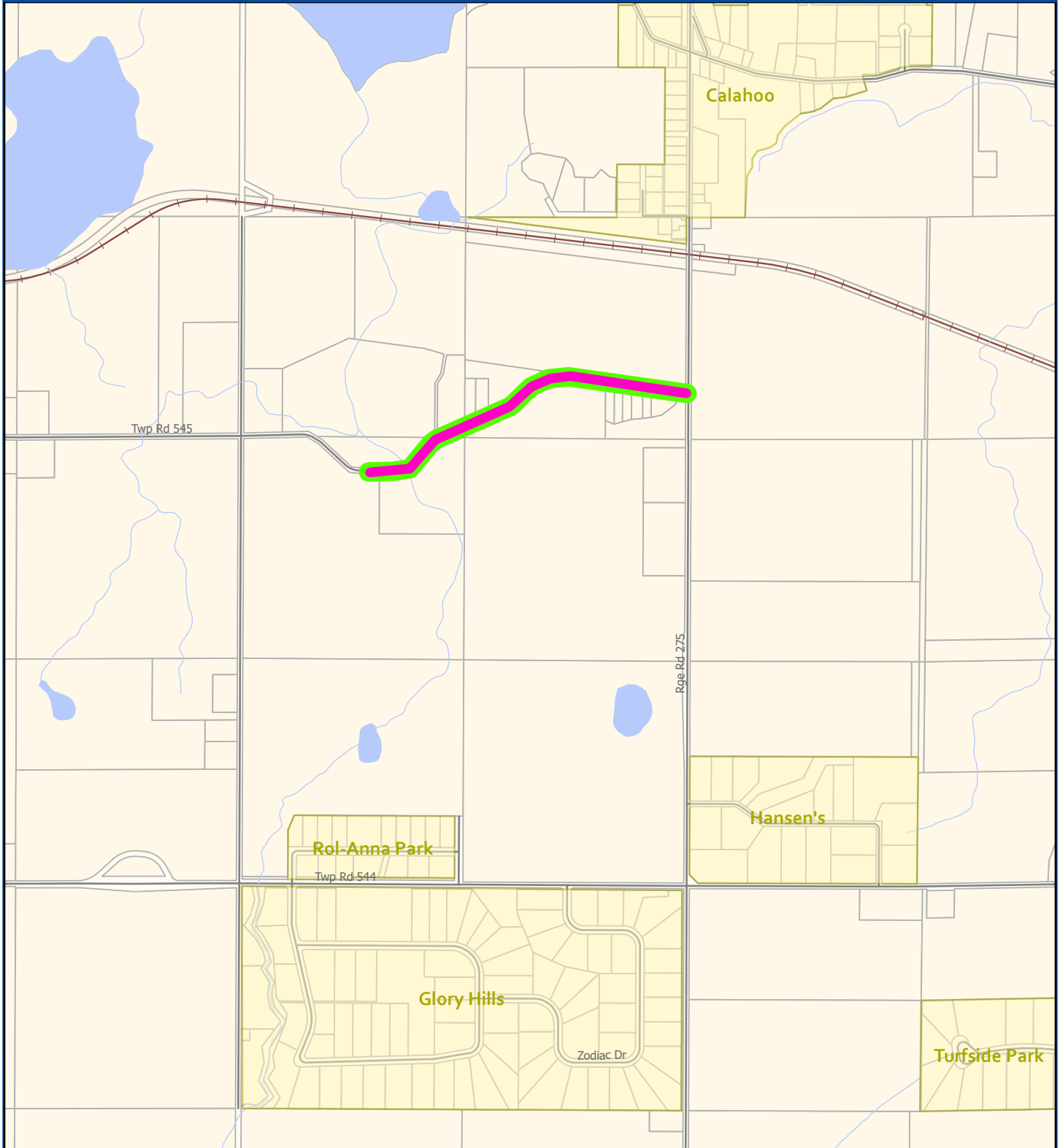


Proposed Additions 2022

Township Road 545 West of RR 275

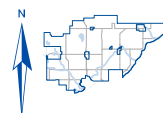


 Affected Residences  Council Consideration

Disclaimer: The information on these maps is based on the most current information available to SCGIS. The information on this map is not intended to replace engineering, financial or primary records research.

NAD 1983 10TM AEP Resource

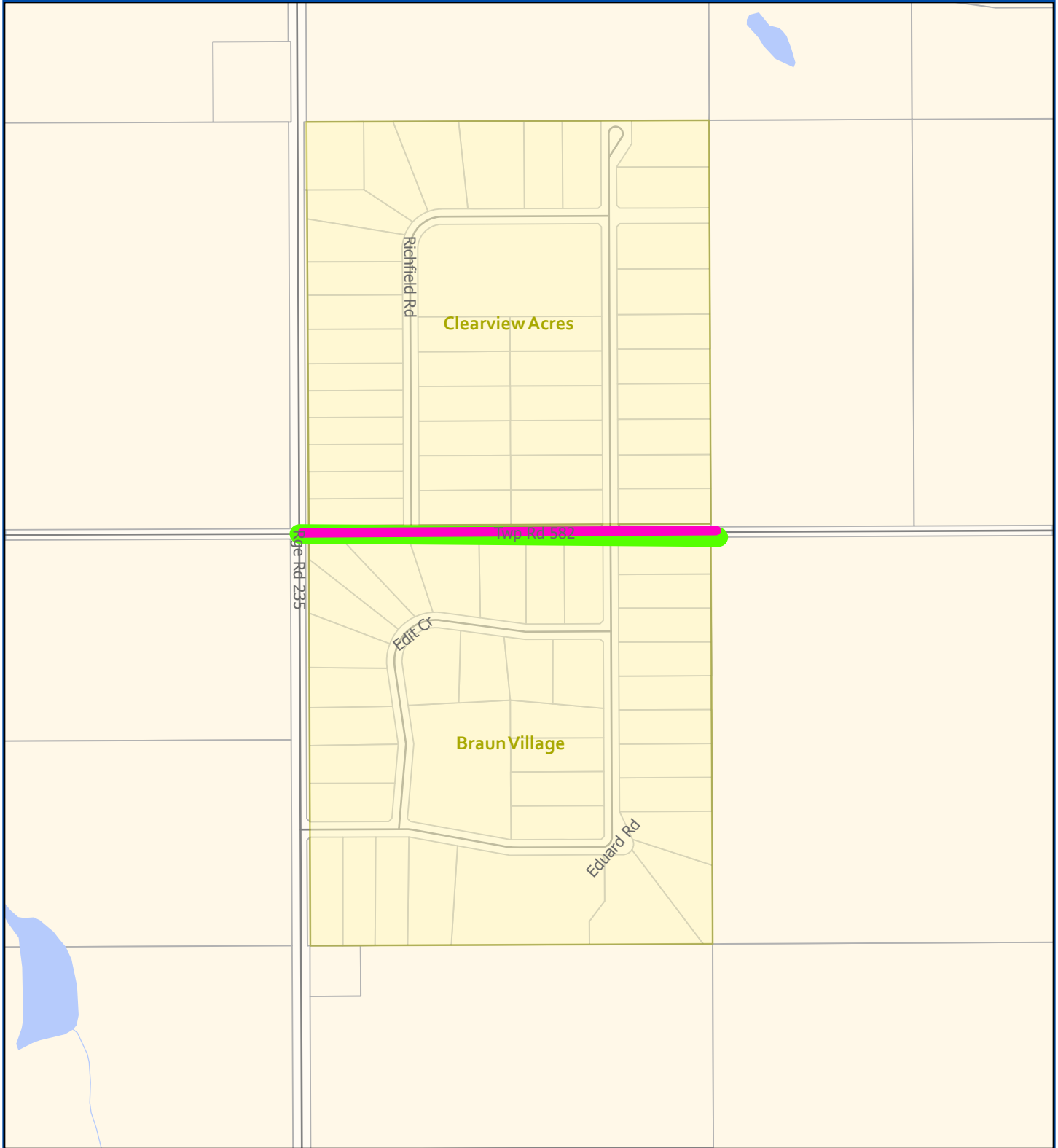
Date Saved: Thursday, April 21, 2022 G:\GIS_Files\Maps and MXDs\Municipal Operations\Roads\DustSuppression\HaulRouteResidences\HaulRouteResidences.aprx



Sturgeon County
Geographic Information System

Proposed Additions 2022

Township Road 582 East of RR 235

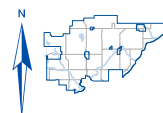


 Affected Residences  Council Consideration

Disclaimer: The information on these maps is based on the most current information available to SCGIS. The information on this map is not intended to replace engineering, financial or primary records research.

NAD 1983 10TM AEP Resource

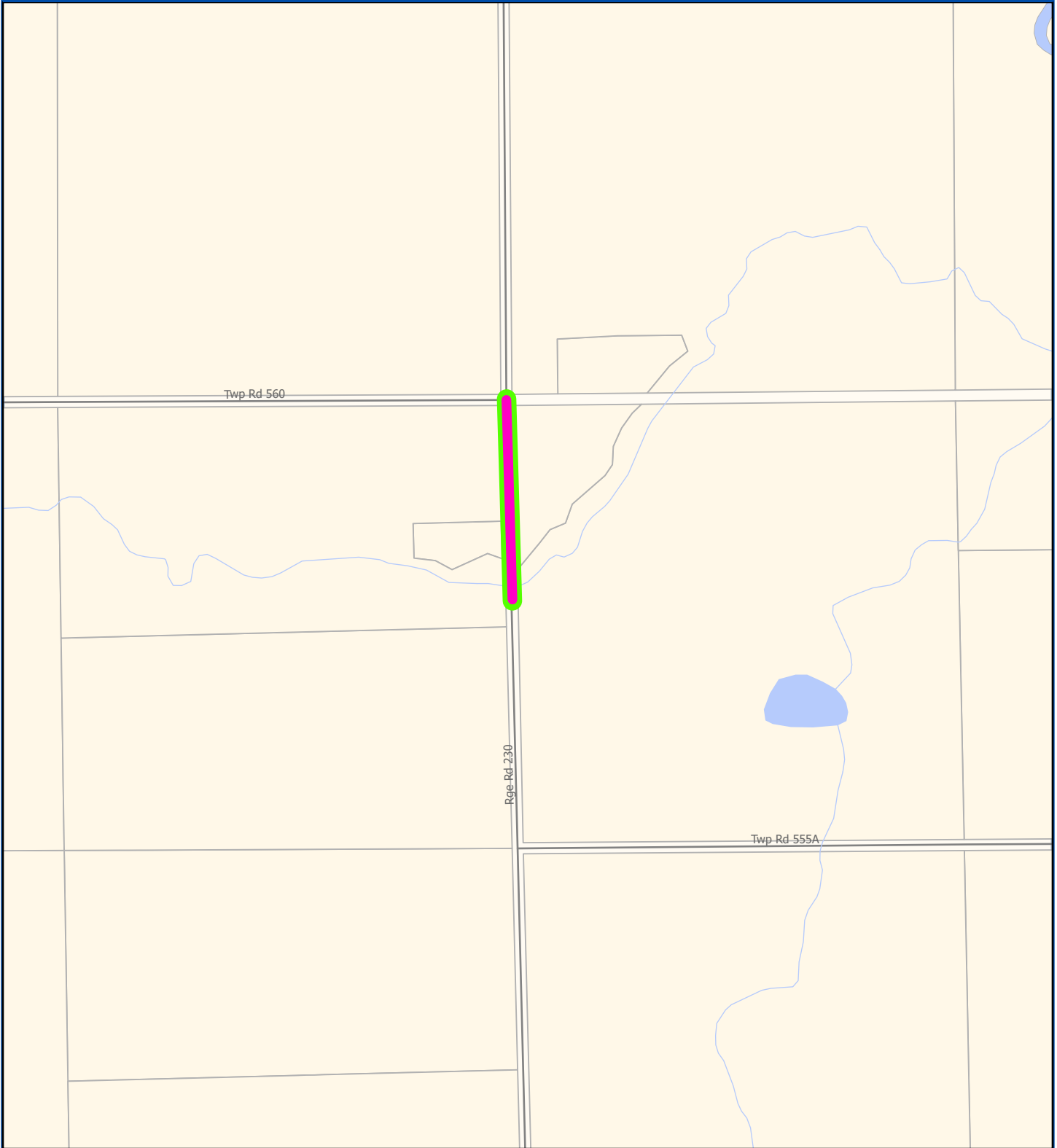
Date Saved: Thursday, April 21, 2022 G:\GIS_Files\Maps and MXDs\Municipal Operations\Roads\DustSuppression\HaulRouteResidences\HaulRouteResidences.aprx



Sturgeon County
Geographic Information System

Proposed Additions 2022

Range Road 230 South of TR 560

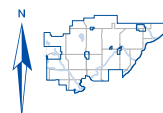


 Affected Residences  Council Consideration

Disclaimer: The information on these maps is based on the most current information available to SCGIS. The information on this map is not intended to replace engineering, financial or primary records research.

NAD 1983 10TM AEP Resource

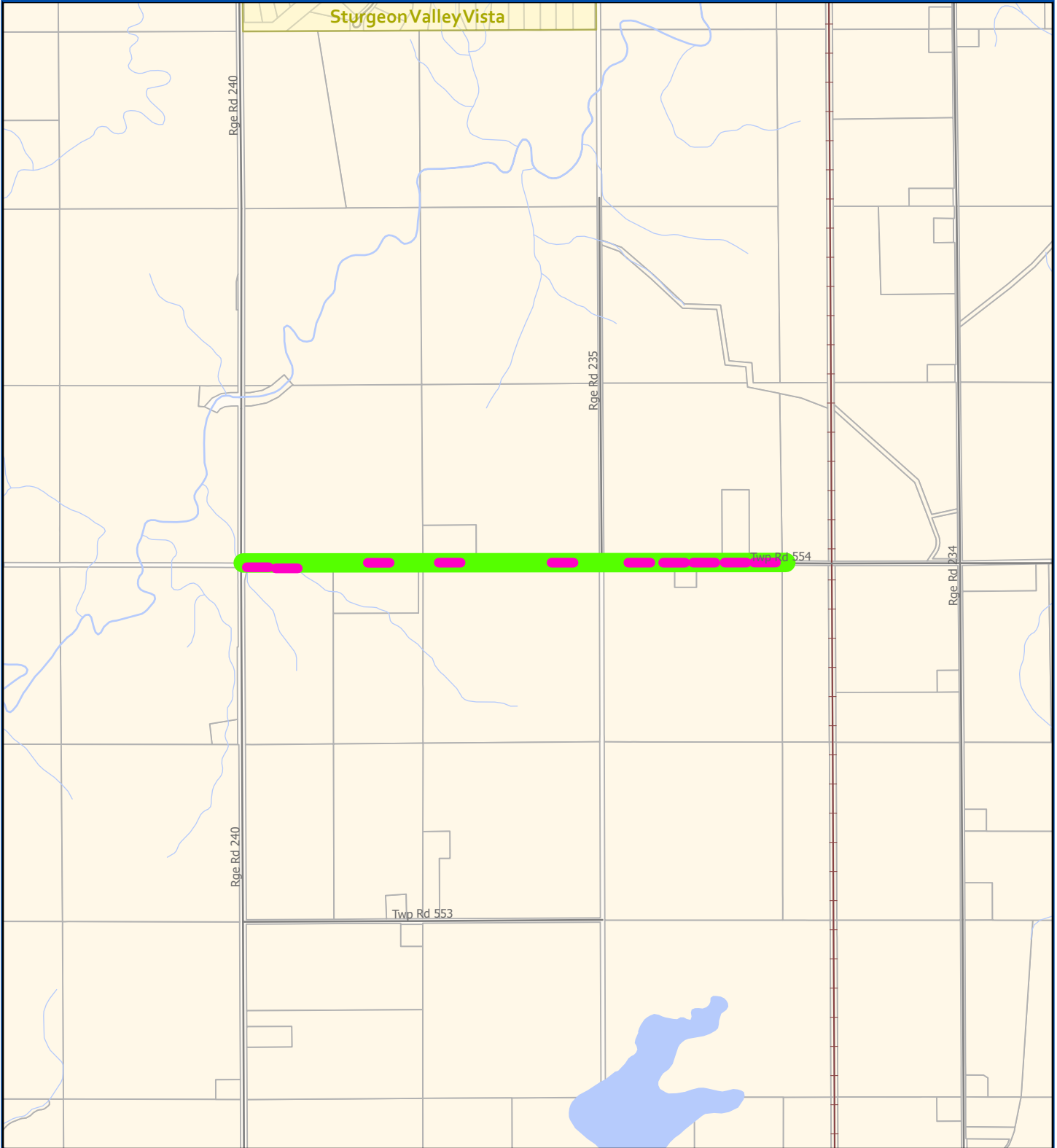
Date Saved: Thursday, April 21, 2022 G:\GIS_Files\Maps and MXDs\Municipal Operations\Roads\DustSuppression\HaulRouteResidences\HaulRouteResidences.aprx



Sturgeon County
Geographic Information System

Proposed Additions 2022

Township Road 554 East of RR 240

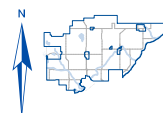


 Affected Residences  Council Consideration

Disclaimer: The information on these maps is based on the most current information available to SCGIS. The information on this map is not intended to replace engineering, financial or primary records research.

NAD 1983 10TM AEP Resource

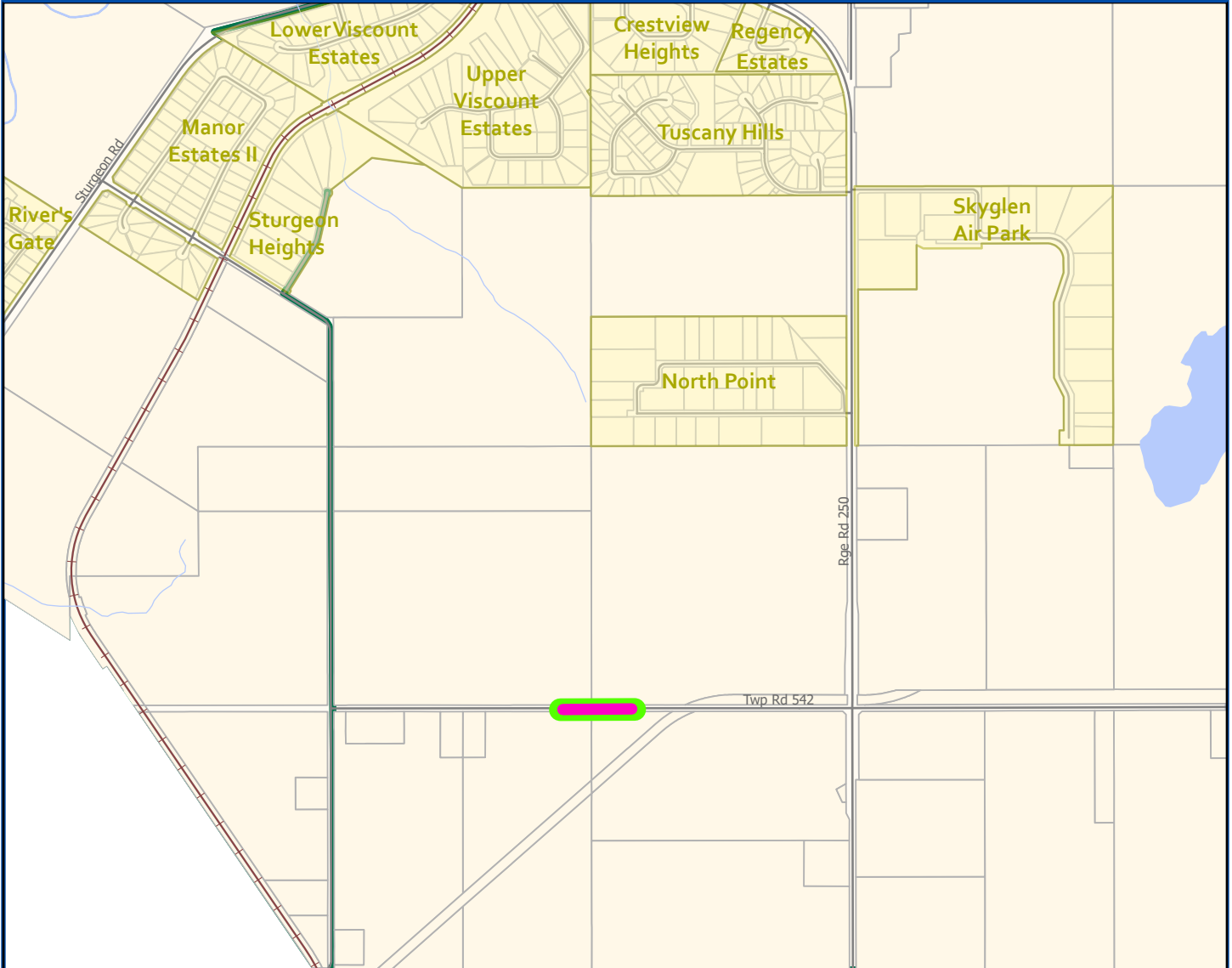
Date Saved: Thursday, April 21, 2022 G:\GIS_Files\Maps and MXDs\Municipal Operations\Roads\DustSuppression\HaulRouteResidences\HaulRouteResidences.aprx



Sturgeon County
Geographic Information System

Proposed Additions 2022

Township Road 542 West of RR 250

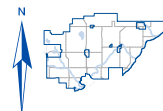


 Affected Residences  Council Consideration

Disclaimer: The information on these maps is based on the most current information available to SCGIS. The information on this map is not intended to replace engineering, financial or primary records research.

NAD 1983 10TM AEP Resource

Date Saved: Thursday, April 21, 2022 G:\GIS_Files\Maps and MXDs\Municipal Operations\Roads\DustSuppression\HaulRouteResidences\HaulRouteResidences.aprx



Sturgeon County
Geographic Information System