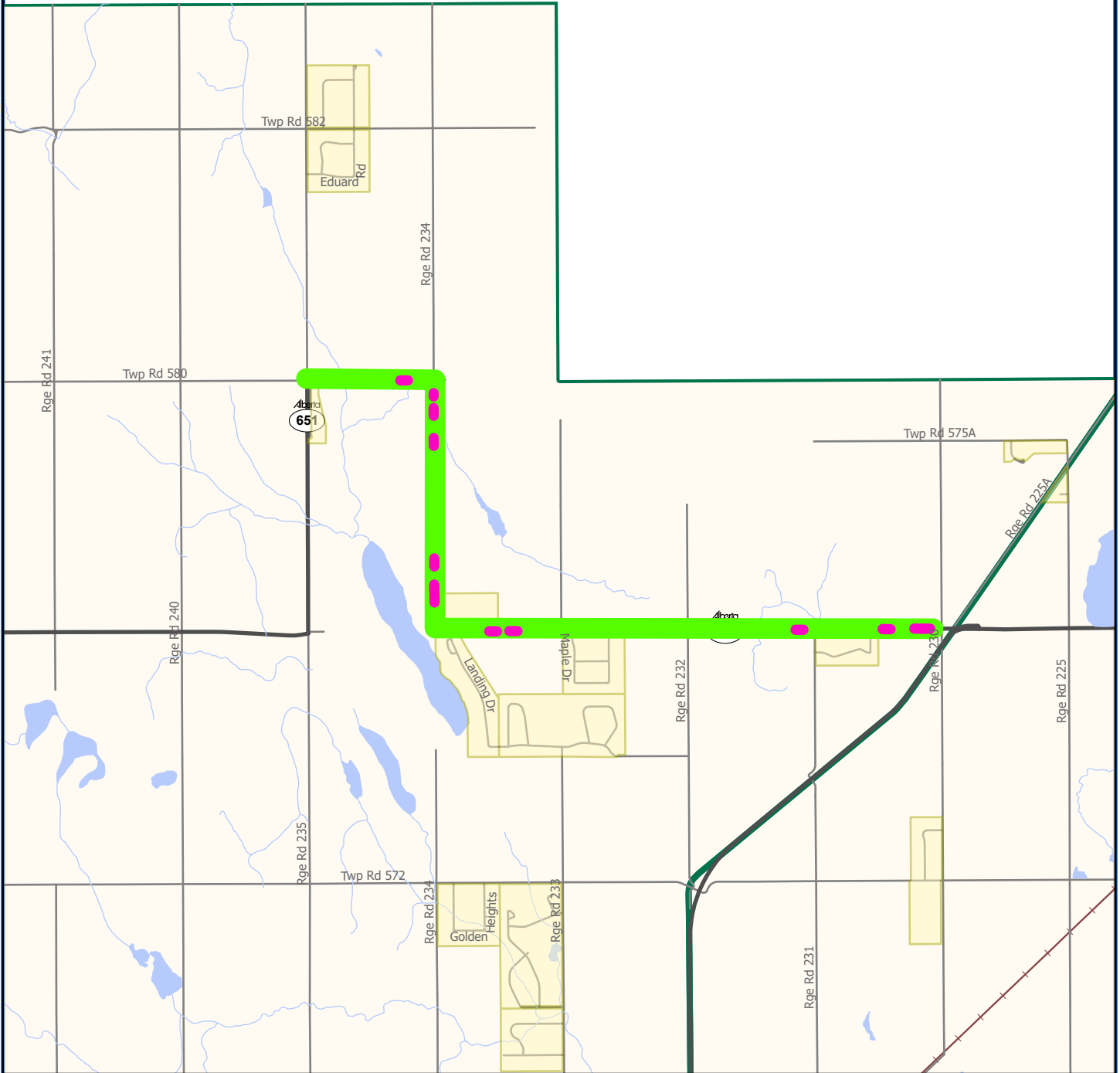


Dust Suppression

Hwy 651 Council Authorized Additional \$205 Subsidy

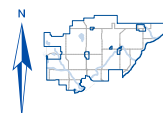


 Affected Residences  Council Consideration

Disclaimer: The information on these maps is based on the most current information available to SCGIS. The information on this map is not intended to replace engineering, financial or primary records research.

NAD 1983 10TM AEP Resource

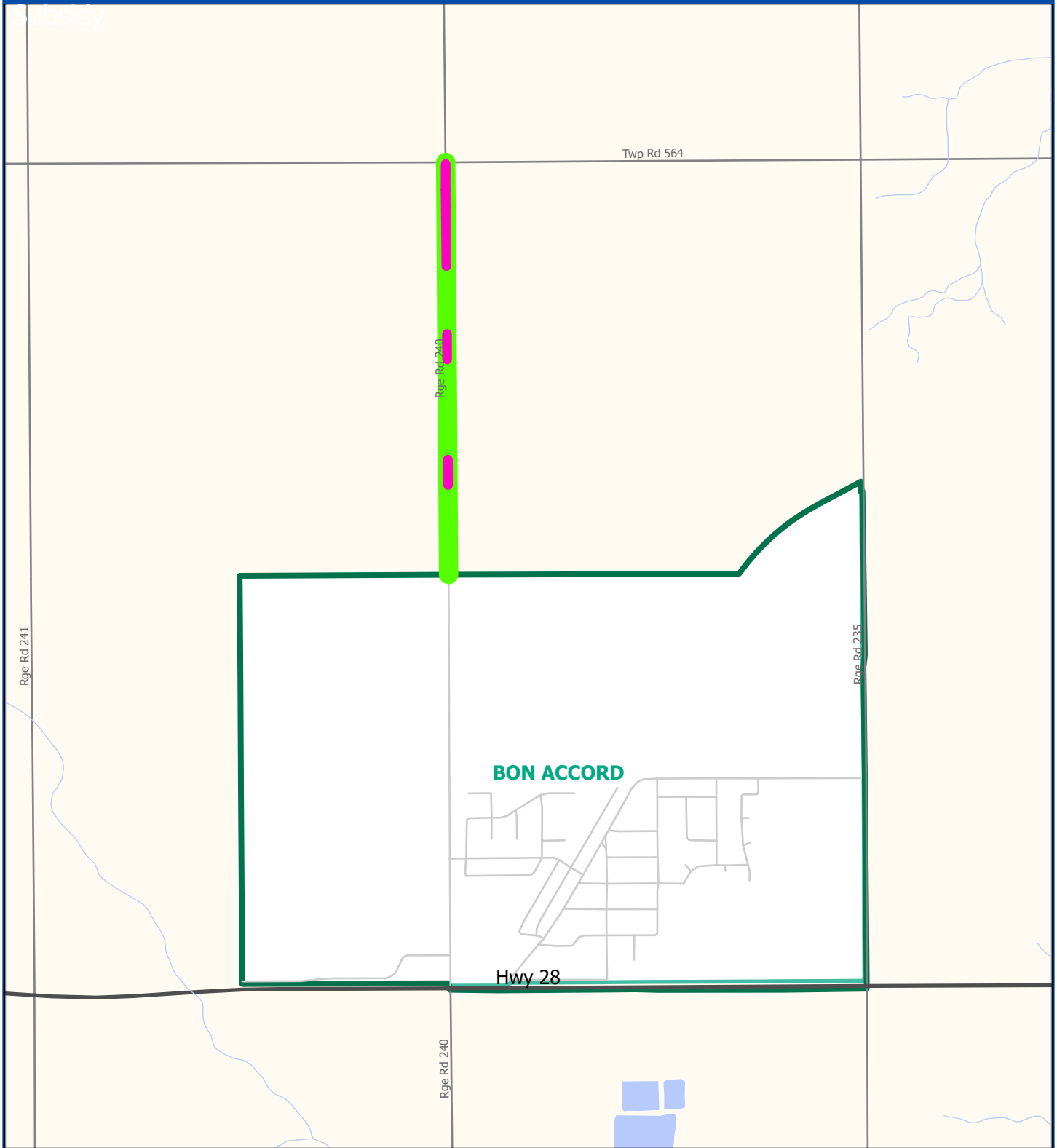
Date Saved: Monday, March 14, 2022 G:\GIS_Files\Maps and MXDs\Municipal Operations\Roads\DustSuppression\HaulRouteResidences\HaulRouteResidences.aprx



Sturgeon County
Geographic Information System

Dust Suppression

Range Road 240 North of Bon Accord - Council Authorized Additional \$205 Subsidy

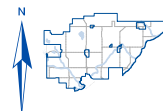


 Affected Residences  Council Consideration

Disclaimer: The information on these maps is based on the most current information available to SCGIS. The information on this map is not intended to replace engineering, financial or primary records research.

NAD 1983 10TM AEP Resource

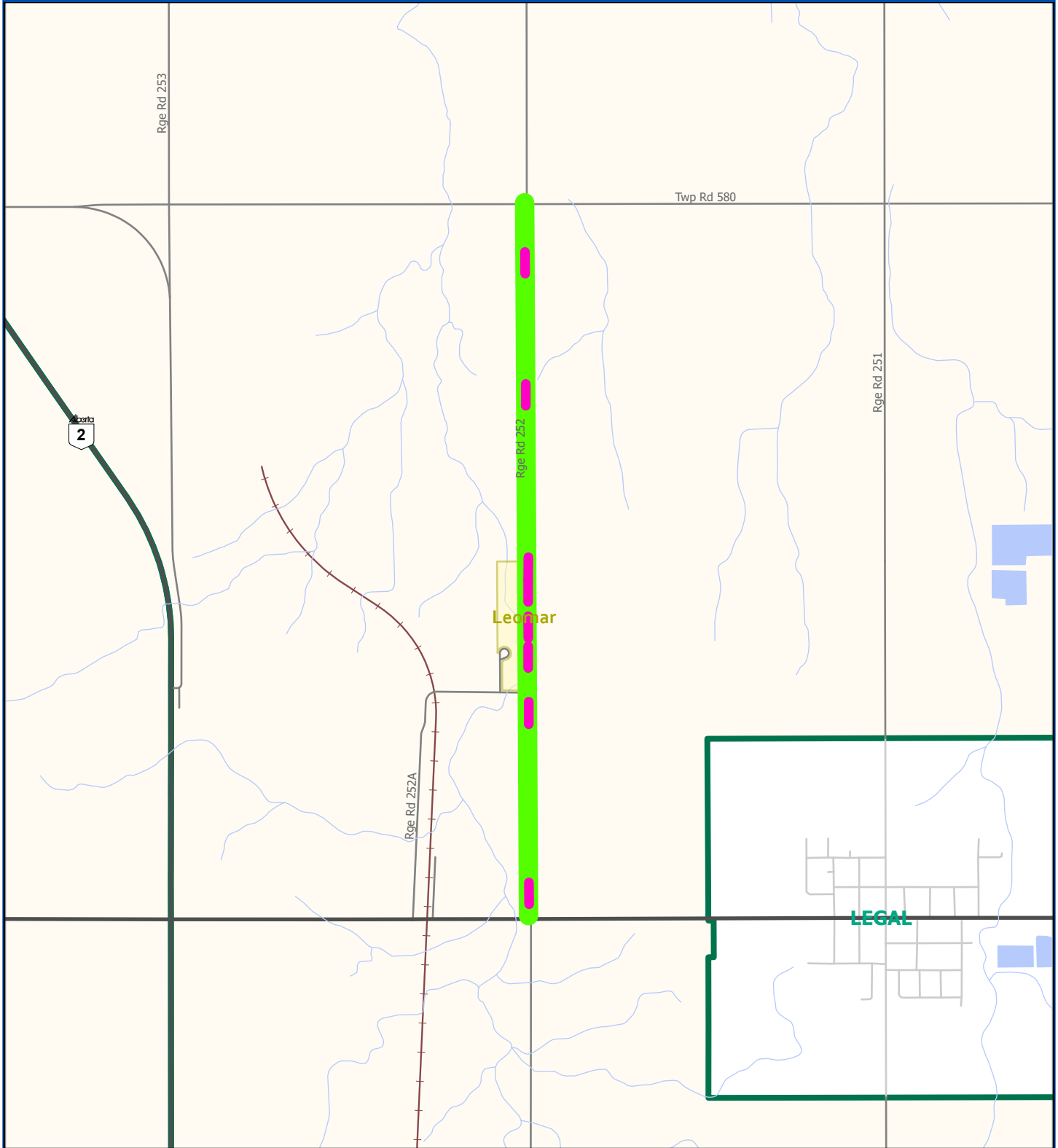
Date Saved: Monday, March 14, 2022 G:\GIS_Files\Maps and MXDs\Municipal Operations\Roads\DustSuppression\HaulRouteResidences\HaulRouteResidences.aprx



Sturgeon County
Geographic Information System

Dust Suppression

Range Road 252 North of Hwy 651 Council Authorized Additional \$205 Subsidy

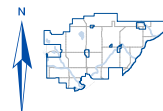


 Affected Residences  Council Consideration

Disclaimer: The information on these maps is based on the most current information available to SCGIS. The information on this map is not intended to replace engineering, financial or primary records research.

NAD 1983 10TM AEP Resource

Date Saved: Monday, March 14, 2022 G:\GIS_Files\Maps and MXDs\Municipal Operations\Roads\DustSuppression\HaulRouteResidences\HaulRouteResidences.aprx



Sturgeon County
Geographic Information System