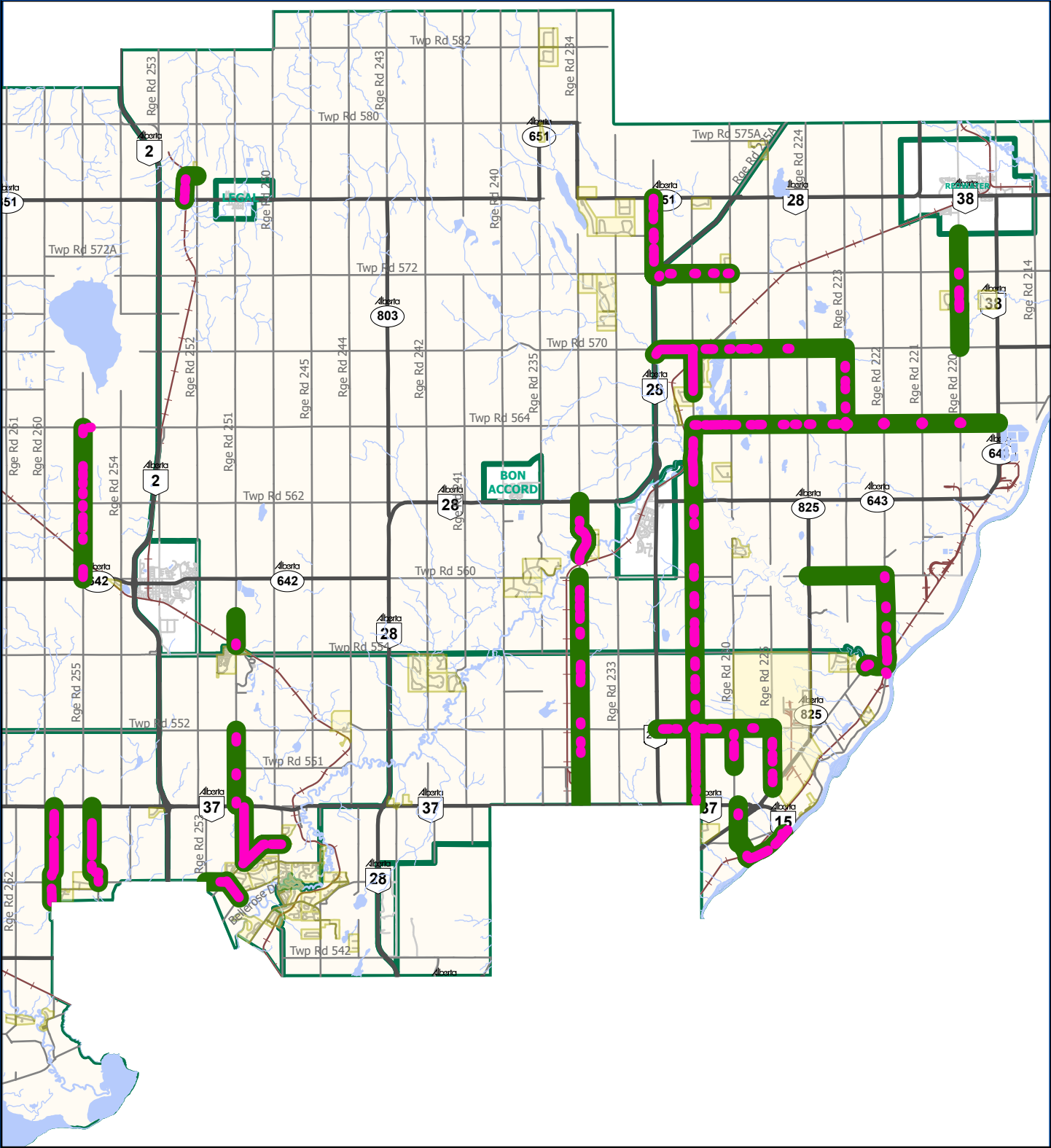


Dust Suppression - All

Designated Routes 2022

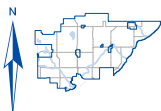


— Affected Residences
 — Designated Routes

Disclaimer: The information on these maps is based on the most current information available to SCGIS. The information on this map is not intended to replace engineering, financial or primary records research.

NAD 1983 10TM AEP Resource

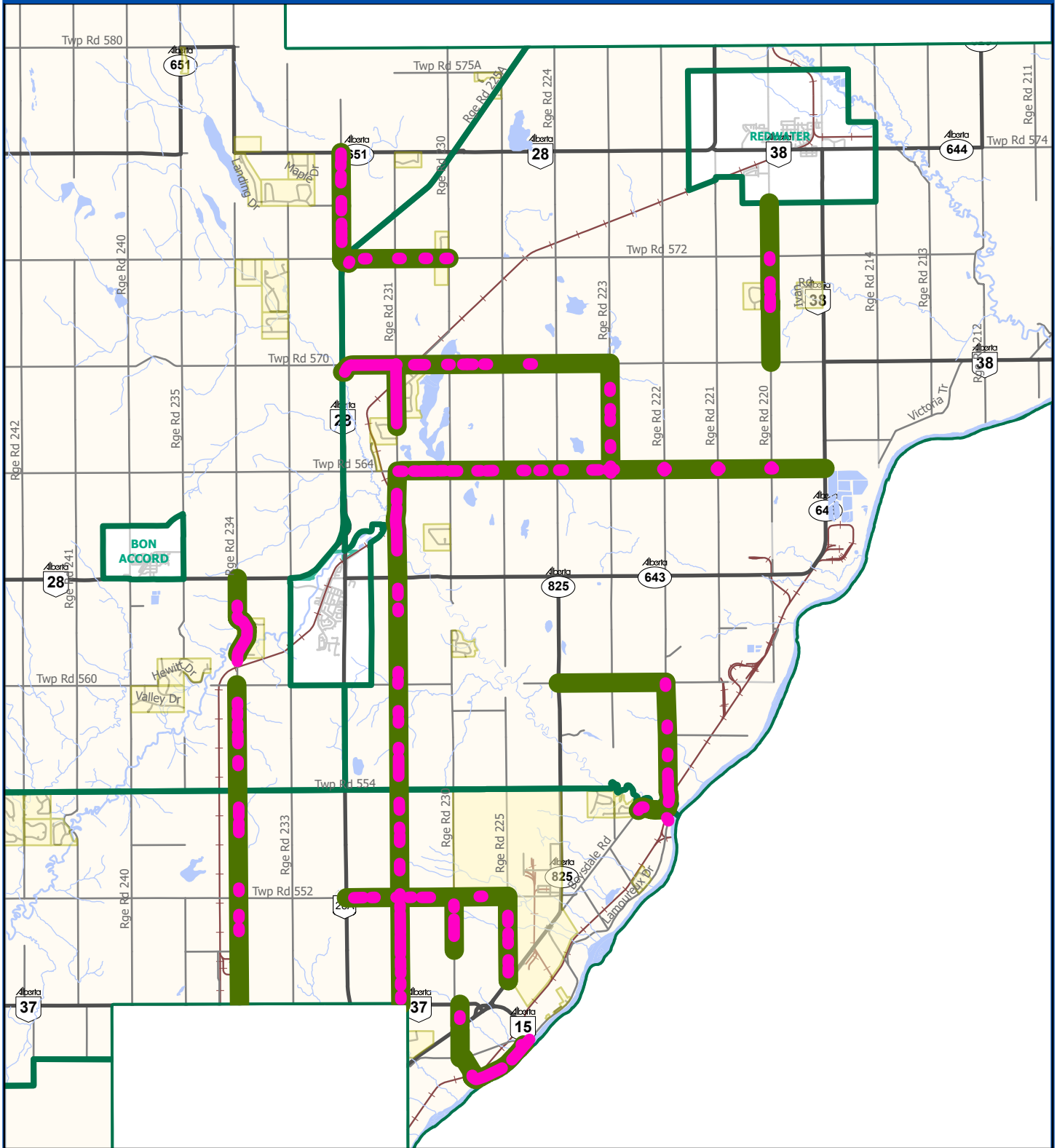
Date Saved: Monday, March 14, 2022 G:\GIS_Files\Maps and MXDs\Municipal Operations\Roads\DustSuppression\HaulRouteResidences\HaulRouteResidences.aprx



Sturgeon County
Geographic Information System

Dust Suppression - East

Designated Routes 2022

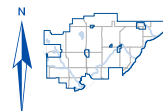


 Affected Residences  Designated Routes

Disclaimer: The information on these maps is based on the most current information available to SCGIS. The information on this map is not intended to replace engineering, financial or primary records research.

NAD 1983 10TM AEP Resource

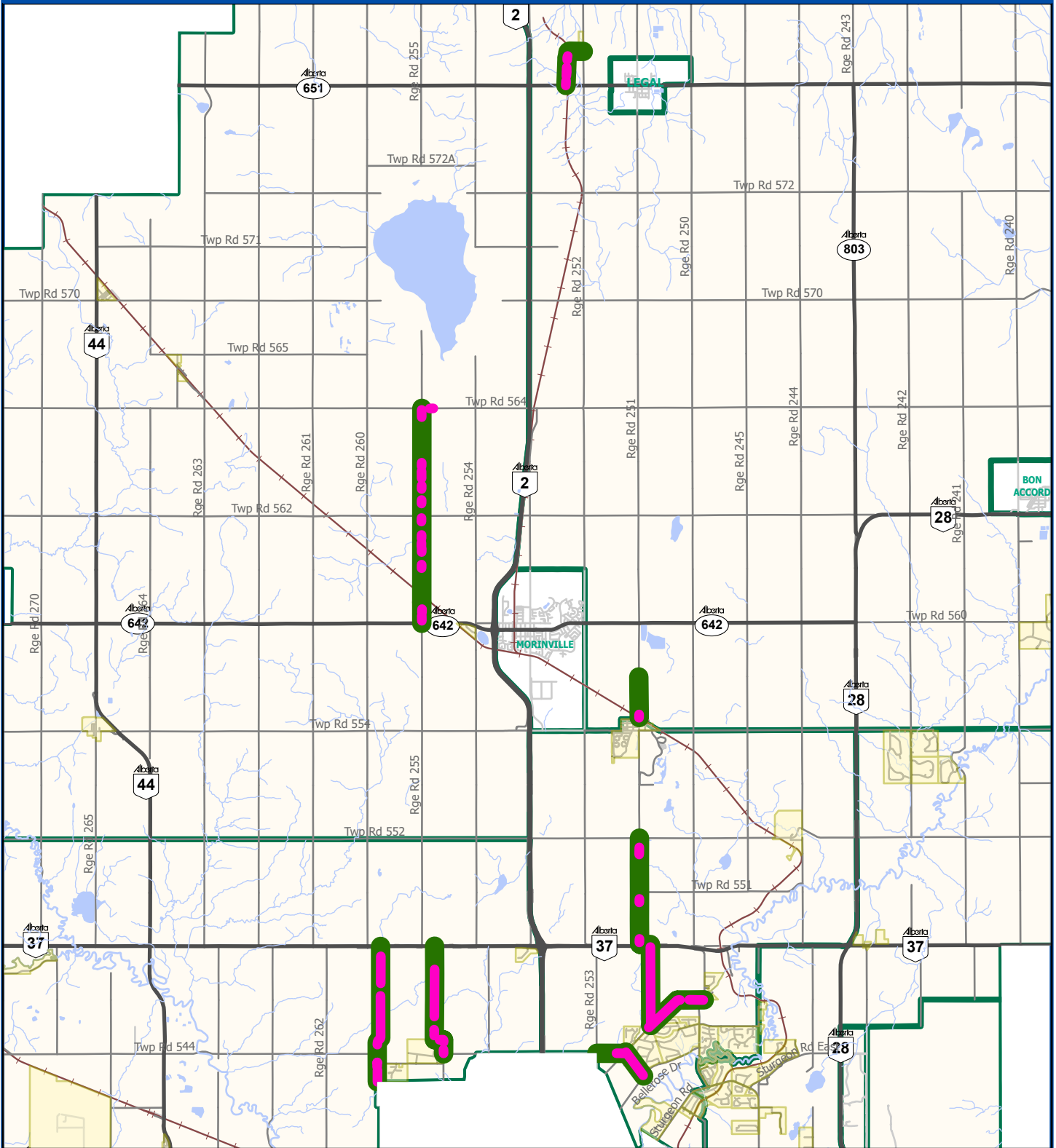
Date Saved: Monday, March 14, 2022 G:\GIS_Files\Maps and MXDs\Municipal Operations\Roads\DustSuppression\HaulRouteResidences\HaulRouteResidences.aprx



Sturgeon County
Geographic Information System

Dust Suppression - West

Designated Routes 2022

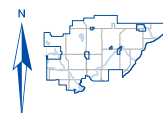


 Affected Residences  Designated Routes

Disclaimer: The information on these maps is based on the most current information available to SCGIS. The information on this map is not intended to replace engineering, financial or primary records research.

NAD 1983 10TM AEP Resource

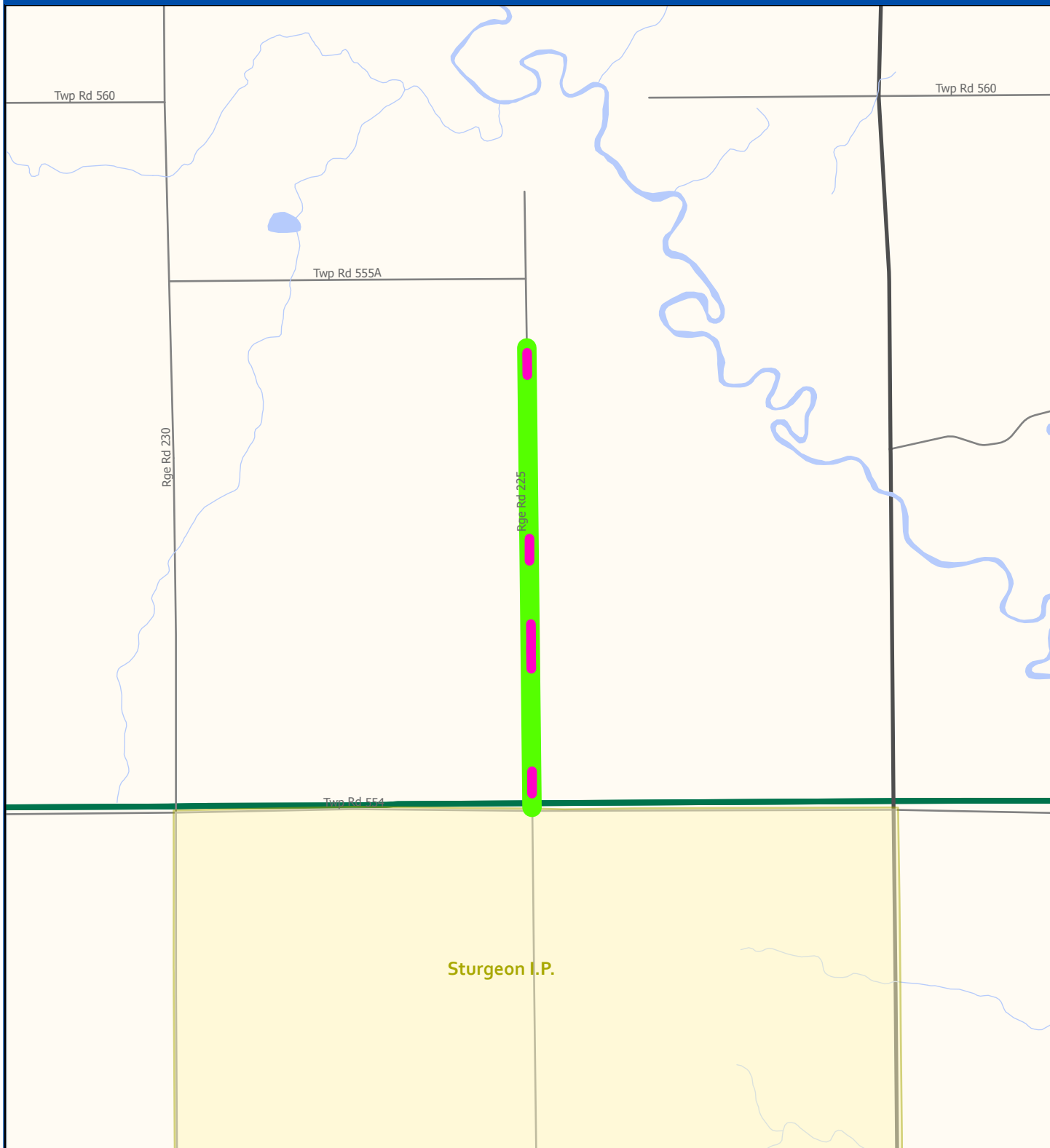
Date Saved: Monday, March 14, 2022 G:\GIS_Files\Maps and MXDs\Municipal Operations\Roads\DustSuppression\HaulRouteResidences\HaulRouteResidences.aprx



Sturgeon County
Geographic Information System

Dust Suppression

Range Road 225 North of TR 554 Council Authorized

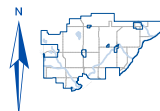


 Affected Residences  Council Consideration

Disclaimer: The information on these maps is based on the most current information available to SCGIS. The information on this map is not intended to replace engineering, financial or primary records research.

NAD 1983 10TM AEP Resource

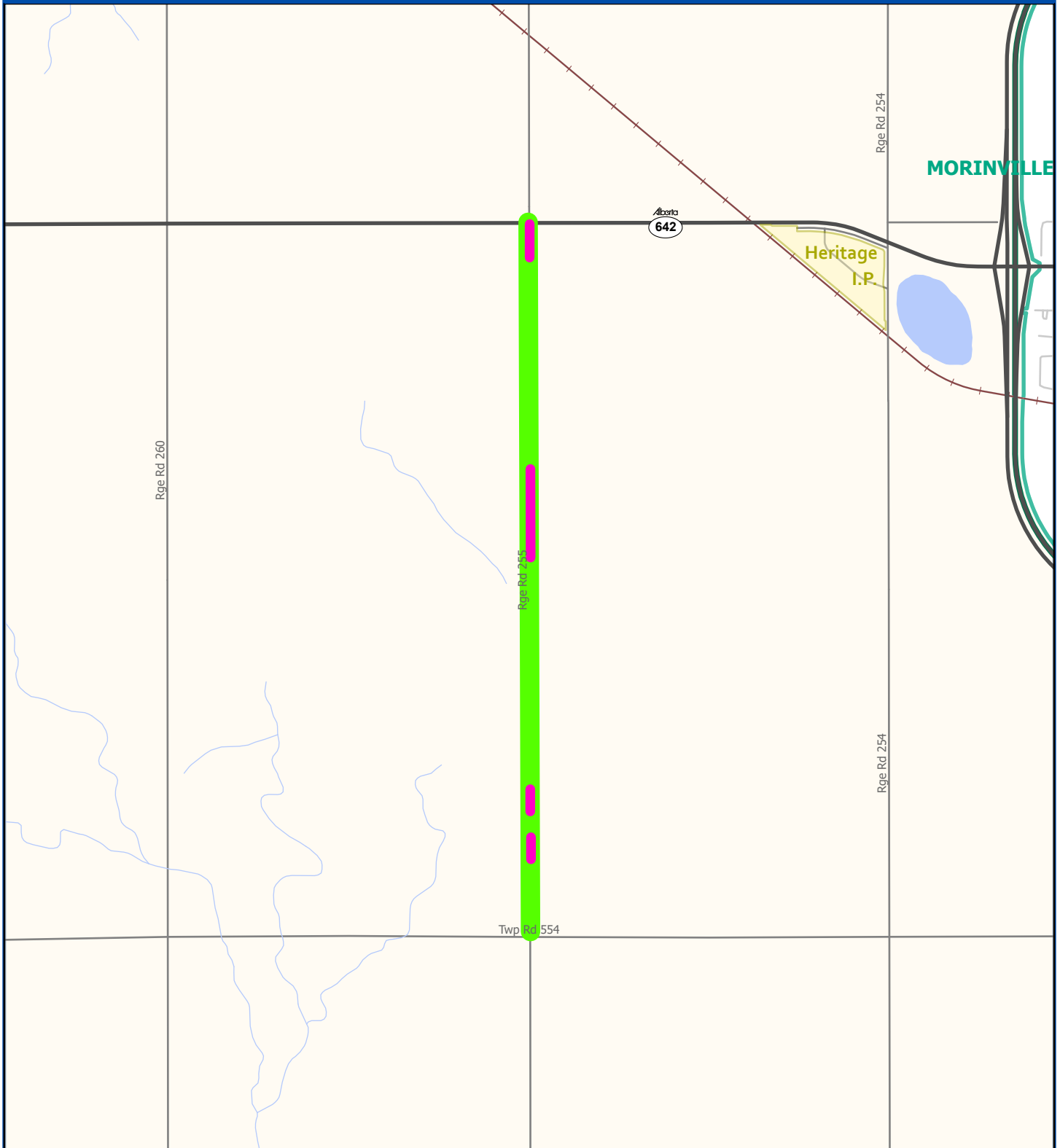
Date Saved: Monday, March 14, 2022 G:\GIS_Files\Maps and MXDs\Municipal Operations\Roads\DustSuppression\HaulRouteResidences\HaulRouteResidences.aprx



Sturgeon County
Geographic Information System

Dust Suppression

Range Road 255 South of Hwy 642 Council Authorized

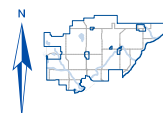


 Affected Residences  Council Consideration

Disclaimer: The information on these maps is based on the most current information available to SCGIS. The information on this map is not intended to replace engineering, financial or primary records research.

NAD 1983 10TM AEP Resource

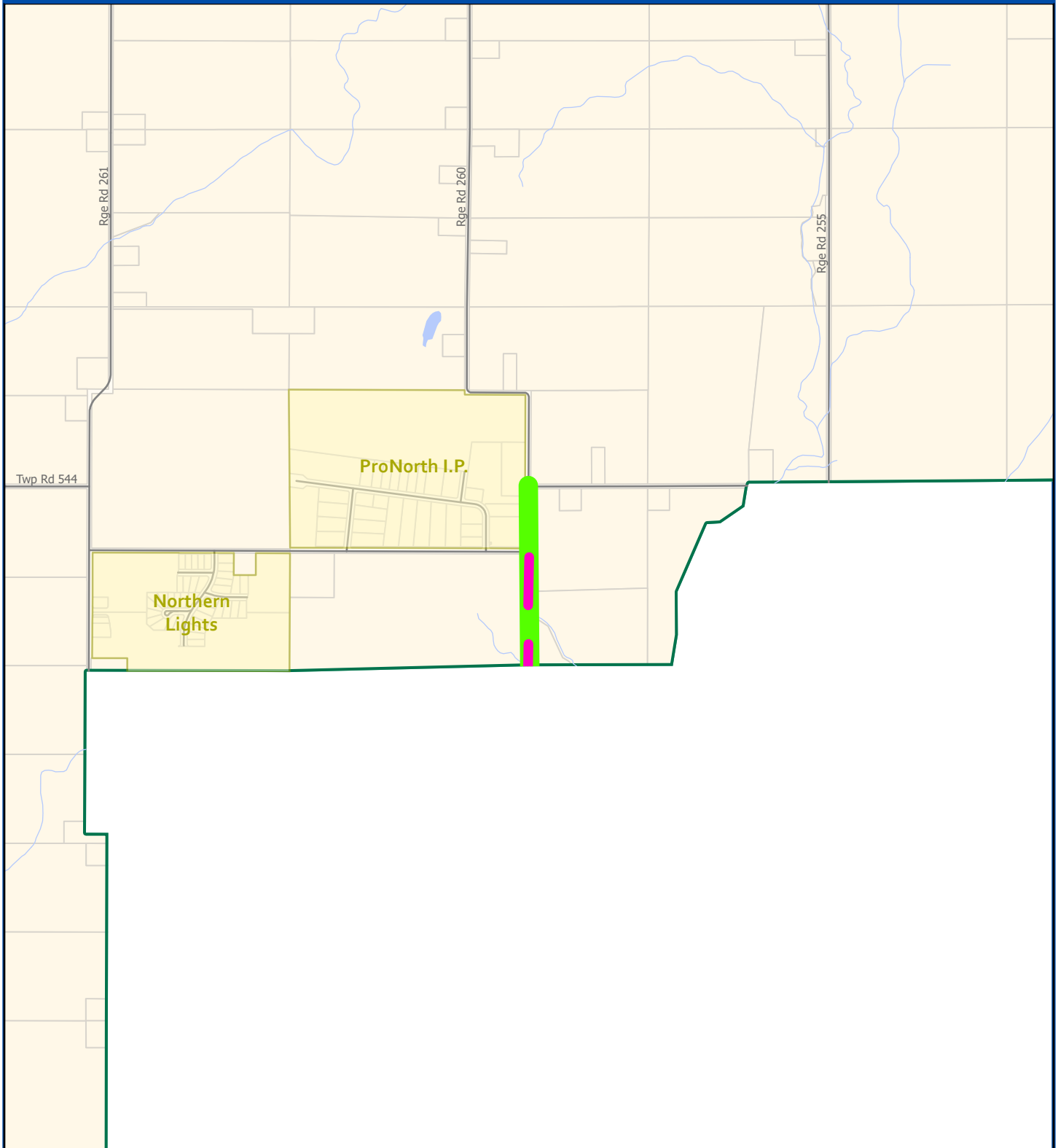
Date Saved: Monday, March 14, 2022 G:\GIS_Files\Maps and MXDs\Municipal Operations\Roads\DustSuppression\HaulRouteResidences\HaulRouteResidences.aprx



Sturgeon County
Geographic Information System

Dust Suppression

Range Road 260 South of Pro North Council Authorized

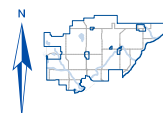


 Affected Residences  Council Consideration

Disclaimer: The information on these maps is based on the most current information available to SCGIS. The information on this map is not intended to replace engineering, financial or primary records research.

NAD 1983 10TM AEP Resource

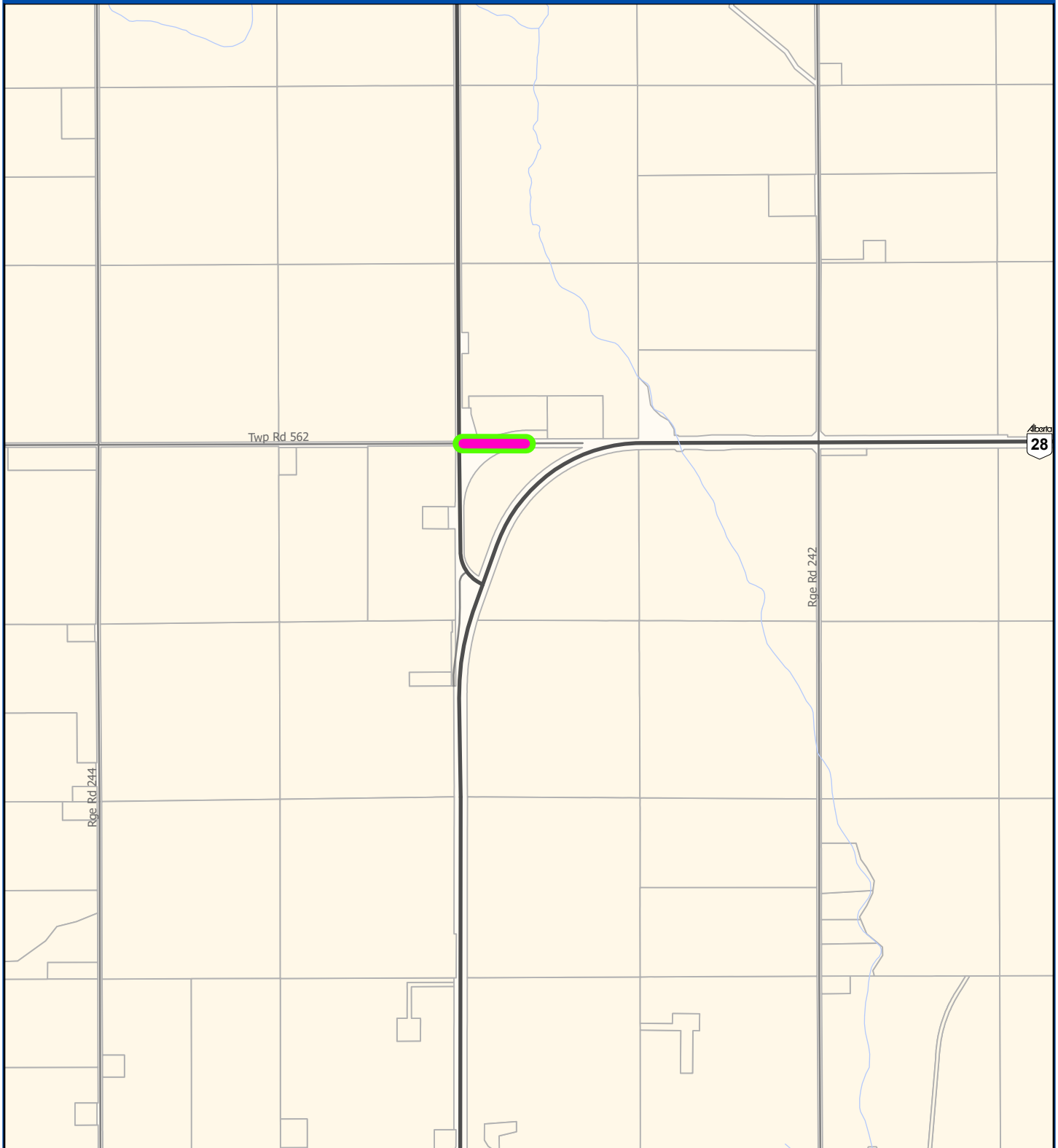
Date Saved: Monday, March 14, 2022 G:\GIS_Files\Maps and MXDs\Municipal Operations\Roads\DustSuppression\HaulRouteResidences\HaulRouteResidences.aprx



Sturgeon County
Geographic Information System

Dust Suppression

Township Road 562 East of Hwy 825 Council Authorized

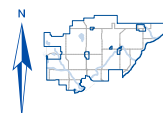


 Affected Residences  Council Consideration

Disclaimer: The information on these maps is based on the most current information available to SCGIS. The information on this map is not intended to replace engineering, financial or primary records research.

NAD 1983 10TM AEP Resource

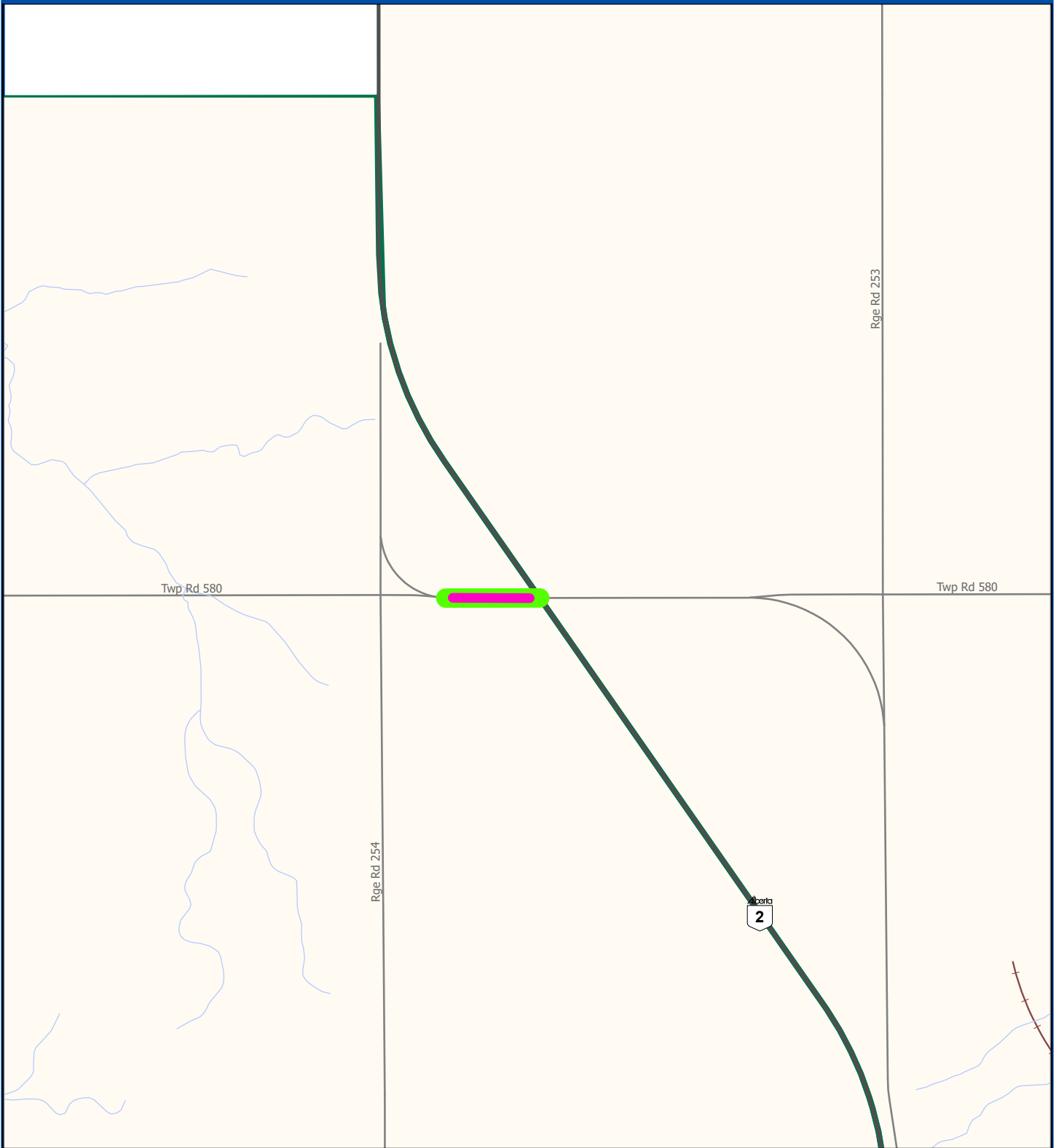
Date Saved: Monday, March 14, 2022 G:\GIS_Files\Maps and MXDs\Municipal Operations\Roads\DustSuppression\HaulRouteResidences\HaulRouteResidences.aprx



Sturgeon County
Geographic Information System

Dust Suppression

Township Road 580 West of Hwy 2 Council Authorized

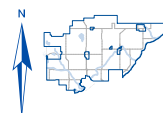


 Affected Residences  Council Consideration

Disclaimer: The information on these maps is based on the most current information available to SCGIS. The information on this map is not intended to replace engineering, financial or primary records research.

NAD 1983 10TM AEP Resource

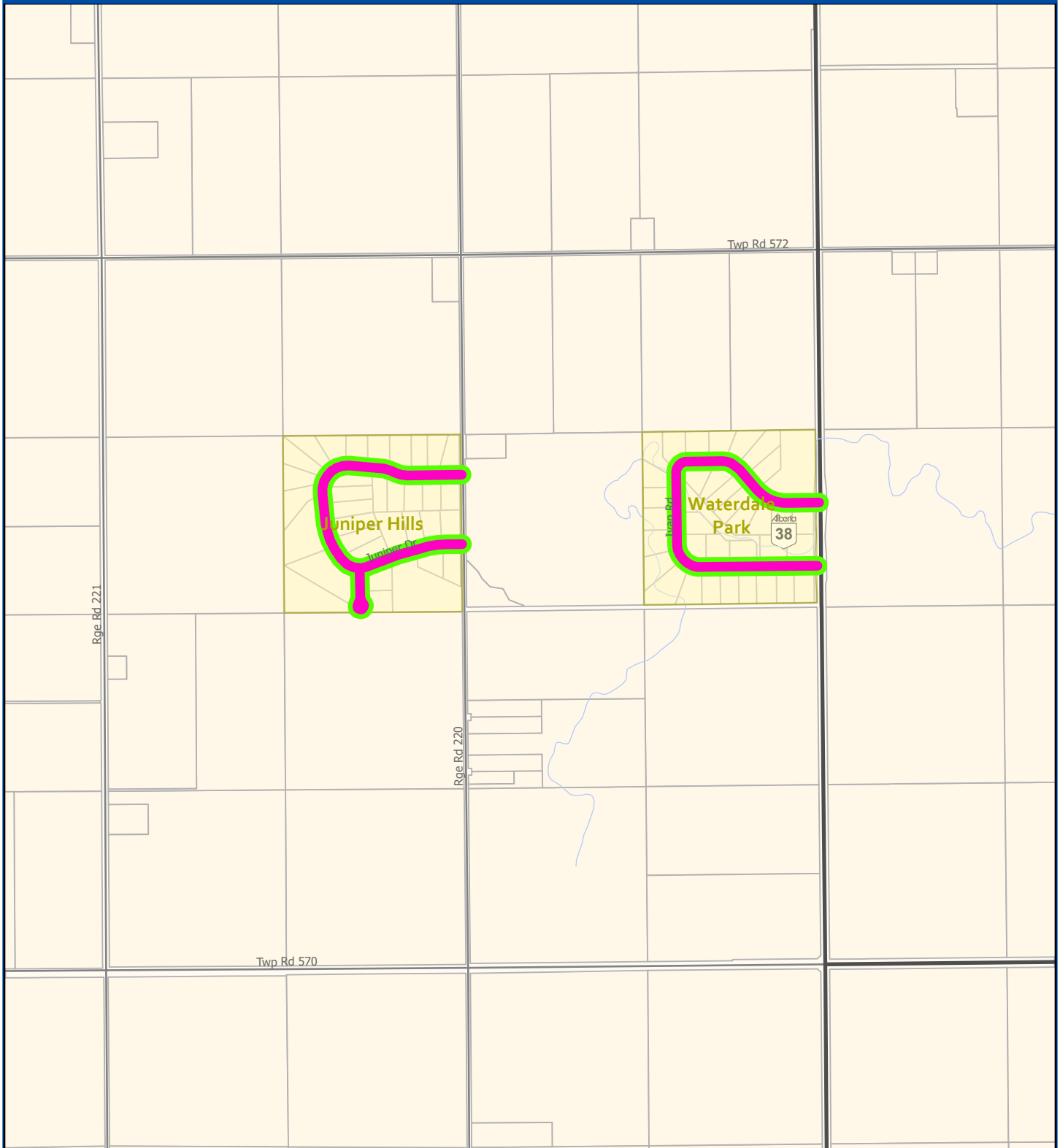
Date Saved: Monday, March 14, 2022 G:\GIS_Files\Maps and MXDs\Municipal Operations\Roads\DustSuppression\HaulRouteResidences\HaulRouteResidences.aprx



Sturgeon County
Geographic Information System

Dust Suppression

Waterdale Park and Juniper Hills Council Authorized

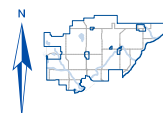


 Affected Residences  Council Consideration

Disclaimer: The information on these maps is based on the most current information available to SCGIS. The information on this map is not intended to replace engineering, financial or primary records research.

NAD 1983 10TM AEP Resource

Date Saved: Monday, March 14, 2022 G:\GIS_Files\Maps and MXDs\Municipal Operations\Roads\DustSuppression\HaulRouteResidences\HaulRouteResidences.aprx



Sturgeon County
Geographic Information System