

## 5.0 Site Characterization

### 5.1 Open Space Classification

Sturgeon County has a wide variety of developed areas, from rural development and agricultural land to suburban subdivisions with traditional urban form. There are also a range of undeveloped areas that form part of the open space network, including river and ravine riparian areas to native forests and grasslands. Figure 12 - Open Space Transect identifies three primary categories of open spaces in Sturgeon County, namely Wild and Natural Areas, Working Landscapes and Developed Areas. Under these three categories are 16 classifications of open space that range from waterbodies and wetlands in the undeveloped natural areas of the County to streetscapes of existing and soon to be developed urban areas of southeast Sturgeon County.

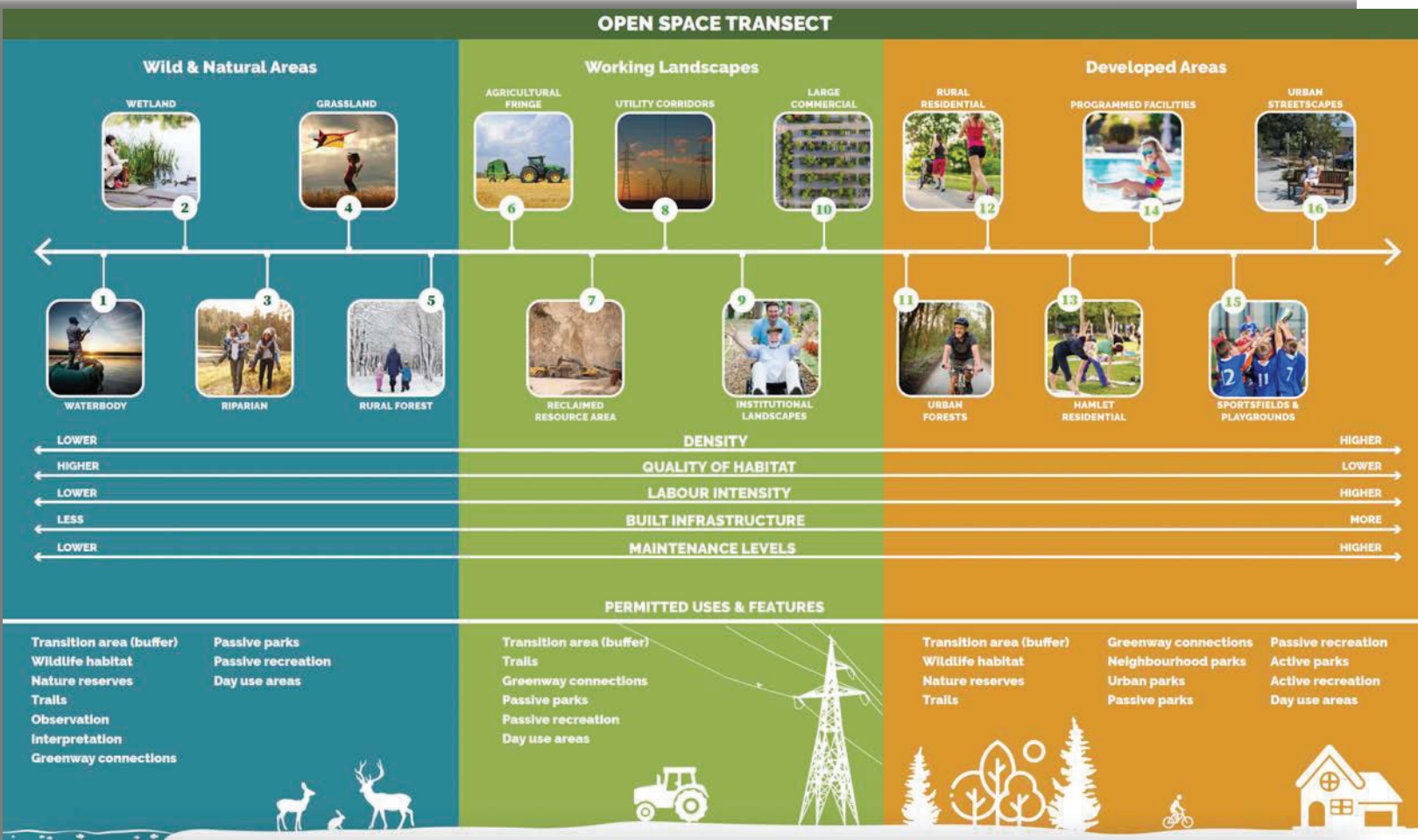


Figure 12 - Open Space Transect

3

## Riparian



### Ecological Activities

Habitat for fish, bird nesting habitat and riparian edge habitat



### Human Uses

Hunting, viewing / nature appreciation and trails

### Target Wildlife Considered

Ungulates

### Primary Human Audience

Small groups



### Min. / Max. Parcel Size Required

Ecological: min. 10m width  
Human: min. 6m width

### County Land Available

100.28 ha

3. **Riparian** – interacting closely with aquatic ecosystems, riparian areas are the zones of lush, often green and moisture-loving vegetation that surround waterbodies. Recreational uses are typically limited to trail access and nature appreciation given the high potential of steeper slopes and more sensitive ecosystems that are less tolerant of human disturbance;



4. **Grassland** – naturally occurring ecosystems that are primarily comprised of perennial grass species, fertile soils and generally flatter land than other ecosystems. Grasslands are compatible with a variety of passive recreational uses and offer greater vistas and views than other local ecosystem types; and



4

## Grassland



### Ecological Activities

Bird nesting habitat, ungulate passage and animal habitat



### Human Uses

Hunting, viewing / nature appreciation and trails

### Target Wildlife Considered

Ungulates

### Primary Human Audience

Small groups



### Min. / Max. Parcel Size Required

Ecological: min. 10m width  
Human: min. 6m width

### County Land Available

301.94 ha