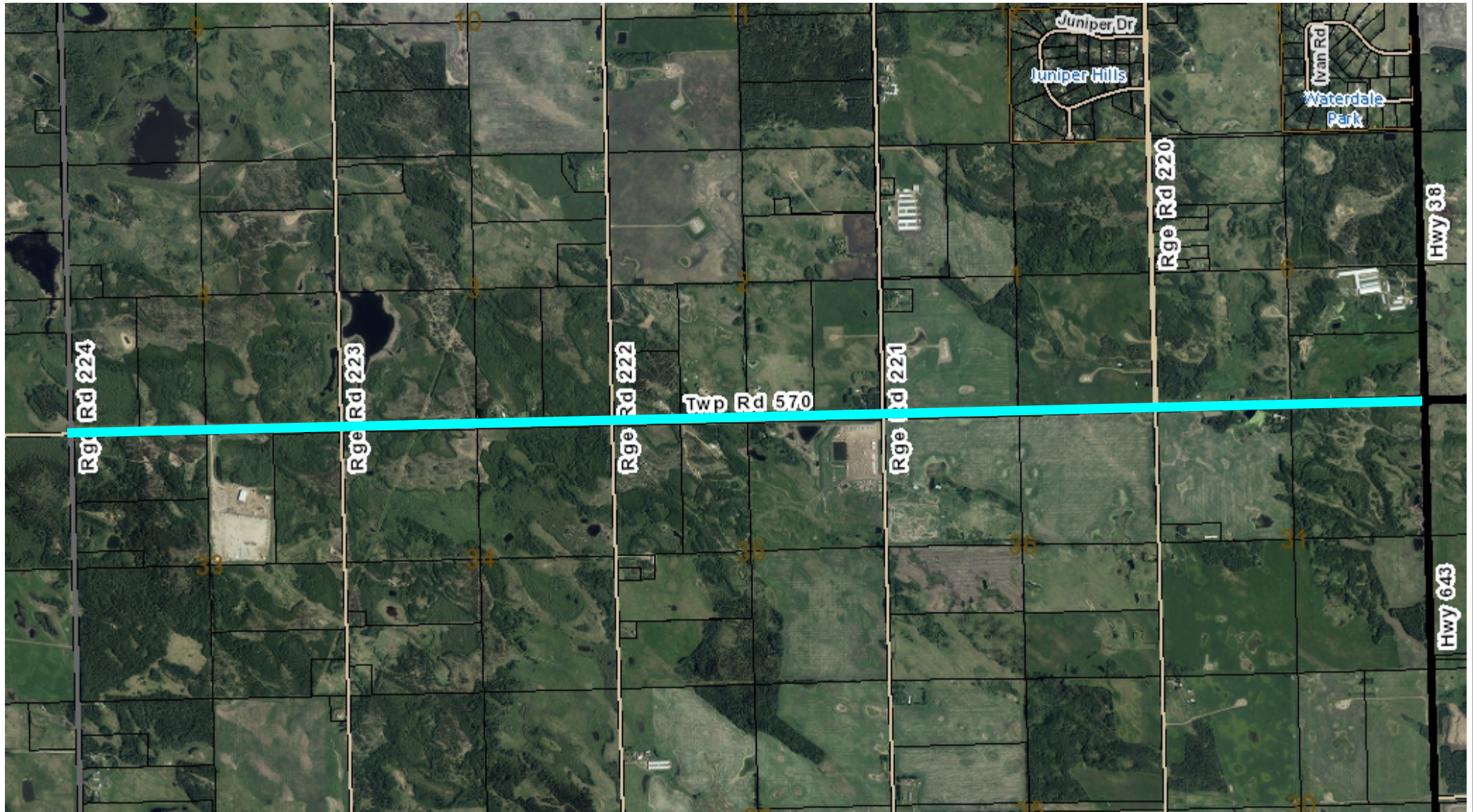


Heartland Drive

Pavement Preservation

Attachment 1

14-Oct-2021



Information on this map is provided solely for the user's information and, while thought to be accurate, is provided strictly "as is" and without warranty of any kind.

NAD_1983_10TM_AEP_Resource
© Sturgeon County

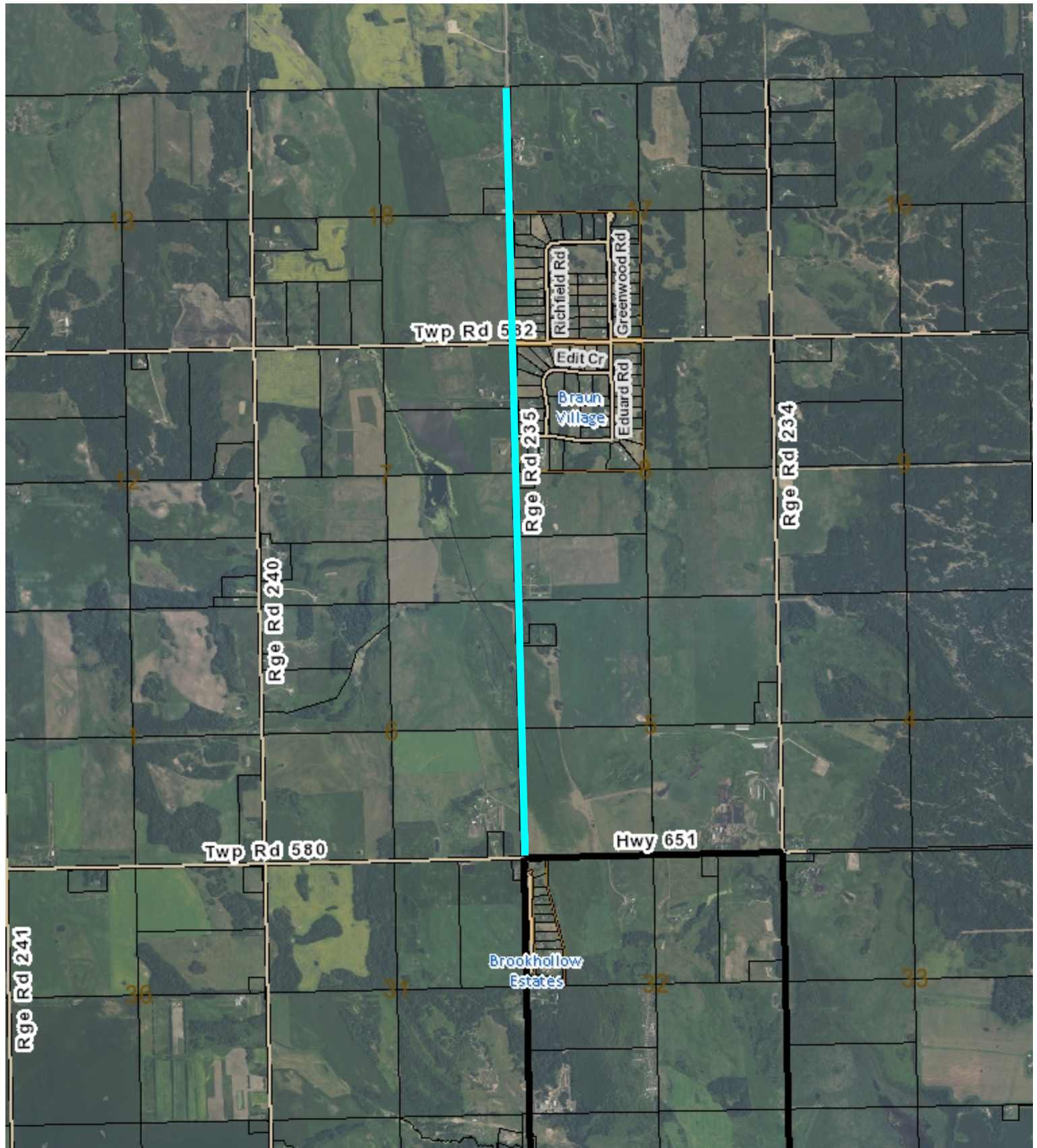
Prepared By: Ty Fergel



Lily Lake Road

Pavement Preservation

26-Jan-2022



NAD_1983_10TM_AEP_Resource
© Sturgeon County

Prepared By: TF

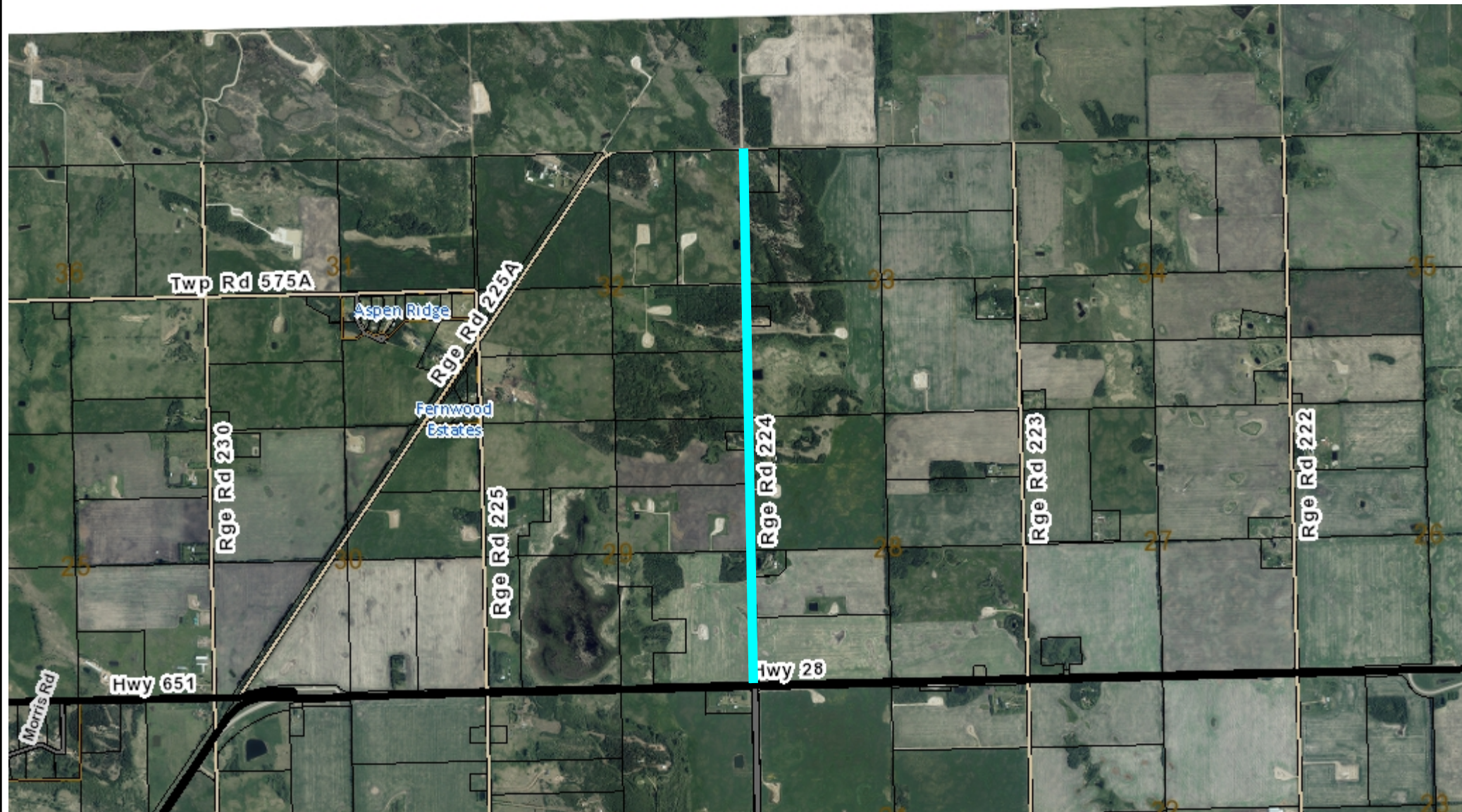
Information on this map is provided solely for the user's information and, while thought to be accurate, is provided strictly "as is" and without warranty of any kind.



Opal Road

Pavement Preservation

14-Oct-2021



Information on this map is provided solely for the user's information and, while thought to be accurate, is provided strictly "as is" and without warranty of any kind.

NAD_1983_10TM_AEP_Resource
© Sturgeon County

Prepared By: Ty Fergel

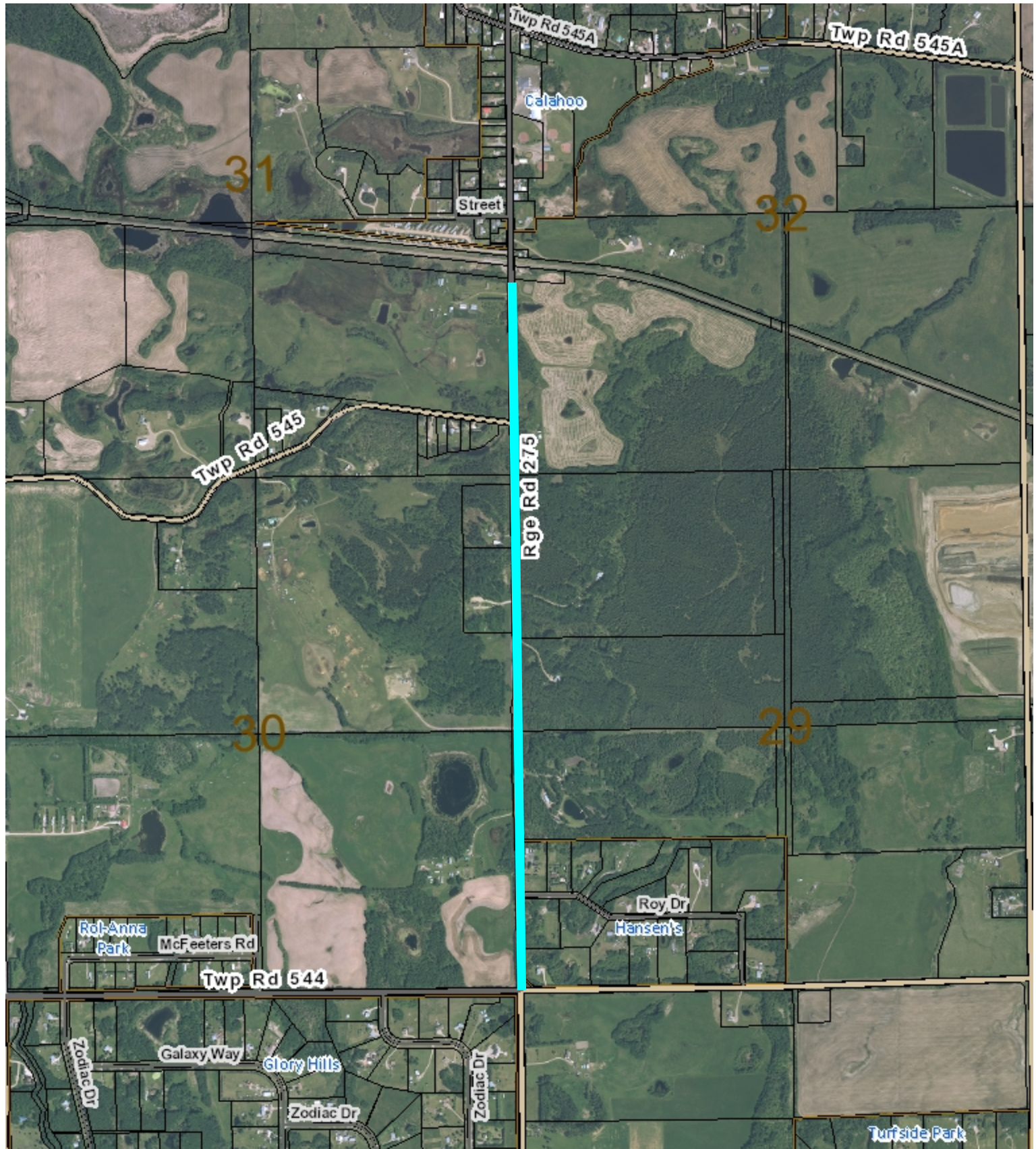


Range Road 275 -

544N

Pavement Preservation

26-Jan-2022



NAD_1983_10TM_AEP_Resource
© Sturgeon County

Prepared By: TF

Information on this map is provided solely for the user's information and, while thought to be accurate, is provided strictly "as is" and without warranty of any kind.



Range Road 223-553N

Pavement Preservation

26-Jan-2022



Prepared By: TF

NAD_1983_10TM_AEP_Resource
© Sturgeon County

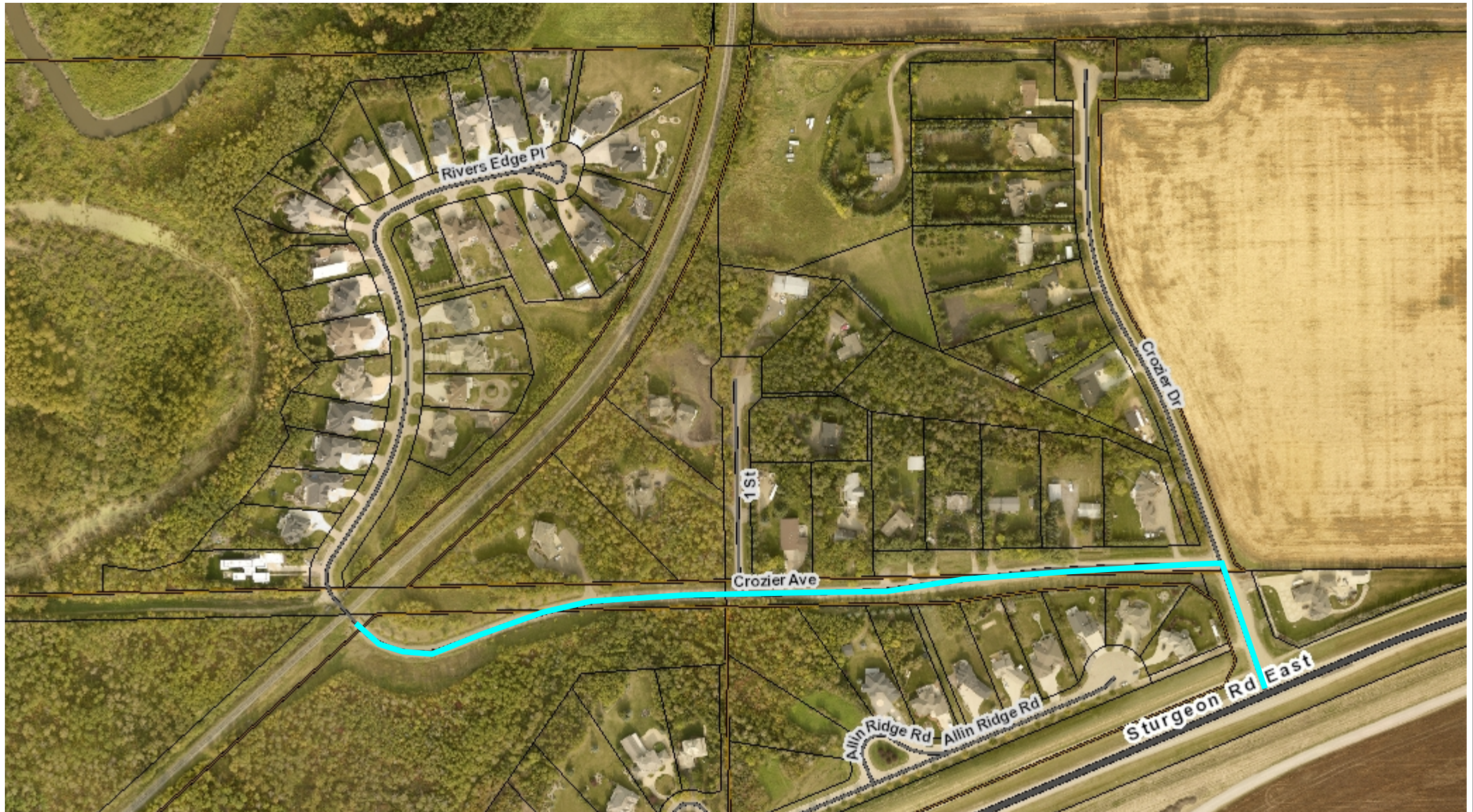
Information on this map is provided solely for the user's information and, while thought to be accurate, is provided strictly "as is" and without warranty of any kind.



Noroncal

Pavement Preservation

22-Nov-2021



Information on this map is provided solely for the user's information and, while thought to be accurate, is provided strictly "as is" and without warranty of any kind.

NAD_1983_10TM_AEP_Resource
© Sturgeon County

Prepared By: TF



Aspen Ridge

Pavement Preservation

22-Nov-2021



Prepared By: TF

NAD_1983_10TM_AEP_Resource
© Sturgeon County

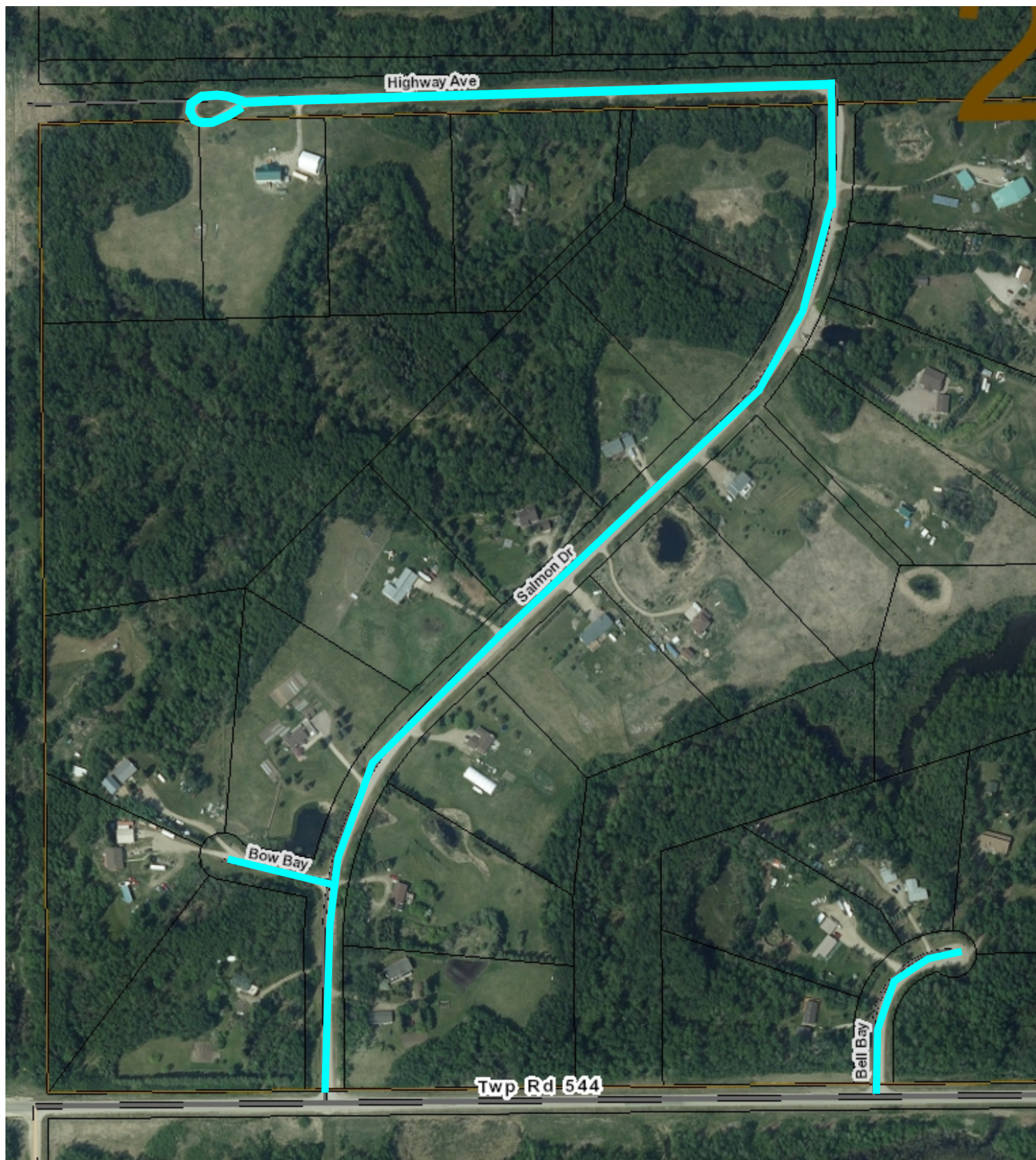
Information on this map is provided solely for the user's information and, while thought to be accurate, is provided strictly "as is" and without warranty of any kind.



Rosal Acres

Pavement Preservation

22-Nov-2021



Prepared By: TF

NAD_1983_10TM_AEP_Resource
© Sturgeon County

Information on this map is provided solely for the user's information and, while thought to be accurate, is provided strictly "as is" and without warranty of any kind.

